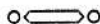




WINSTONE LTD

Czechoslovakian Table Tennis Tour of New Zealand 1974



CZECHOSLOVAKIA v. HAMILTON



Y.M.C.A. Stadium

36 Pembroke Street, Hamilton

Friday, 21st June, 1974

at 8.00 p.m.

20 cents

HAMILTON TABLE TENNIS ASSOCIATION (Inc.)

Patron: Mr I. J. DRABBLE

President: Mr A. K. ATTWOOD

Vice-Presidents:

Messrs I. L. HOUGHTON, B. SHERIDAN, G. R. SHEWAN

Secretary: Mrs N. E. BISHOP

Treasurer: Mr P. T. REILLY

Auditor: Mr K. C. CHANDLER

Solicitor: Mrs S. J. G. BROOKER

Executive Committee:

Mesdames V. M. KERR, C. E. TADEMA, C. L. WALKER; Messrs
C. N. CAMPBELL, J. P. F. KENNERLEY, A. E. KING, B. C. LESTER,
G. R. McCARTHY, P. R. PERRY, B. SHERIDAN, K. H. TURNBULL,
E. J. WHITING, E. D. WILLIAMS.



NEW ZEALAND TABLE TENNIS ASSOCIATION

Patron: His Excellency, the Governor General,
Sir DENNIS BLUNDELL, G.C.M.G., G.C.V.O., K.B.E.

President: Mr R. J. RASSIE

Vice-Presidents:

Messrs A. K. ATTWOOD, K. A. FRASER, I. L. HOUGHTON, V. H.
HURREY, A. B. McCALLUM, F. J. O'GORMAN, R. W. OWEN, J. E.
STEWART, N. H. TIZARD, G. V. WILKINSON

Secretary: Mr K. C. WILKINSON

Treasurer: Mr S. F. MILLER

Auditor: Mr A. DEAN

Solicitor: Mr K. F. HOGGARD

Executive Committee:

Messrs A. R. HARDING (Chairman), R. J. MENCHI (Deputy Chairman),
Mrs P. DEAN, Miss J. E. BROWN, Messrs P. F. BARGH, L. E. BOUZAIID,
G. B. MURPHY, K. L. POINTON, W. E. POTTER, J. W. S. STEVENSON

WINSTONES CZECHOSLOVAKIAN TABLE TENNIS TOUR OF NEW ZEALAND

We are privileged to again participate in and enjoy the spectacle of an international tour of New Zealand by a team sponsored by Winstones Ltd. We extend a sincere welcome to the Czechoslovakian team, and take this opportunity of thanking them for having undertaken this tour which is so beneficial to the sport in New Zealand.

A city does not comprise only industries, offices, houses, streets, parks, services and the like. A city holds people and starts functioning as a thriving entity when all the basic provisions are there for the needs of its citizens. With the ever increasing leisure time, energy and finances available in the community, it is mandatory for a healthy environment to be achieved. This can best be done by active participation in recreational sport. Meaningful sporting activities are dependant on three elements: players, administrators, and facilities. The Hamilton Table Tennis Association is fortunate in the numbers that are engaged in the sport, in the strength and willingness over a period of years of its administrators and in its current stadium building construction.

It is heartening to have, and we pay a tribute to, the example set by Winstones in encouraging sporting administrators by its sponsorship of such outstanding tours, which also add that necessary "spice" to the year's activities. We acknowledge elsewhere in the programme the assistance other Hamilton firms are granting the Association in its activities. All these firms are playing their part in the creation of a true city that is proud to welcome the world renowned Czechoslovakian team of Miss Alice Grofova, Josef Dvoracek, Jaroslav Kunz, Milan Orlovski and Dr. Vladimir Palecek.

HAMILTON MATCH OFFICIALS

Manager: Mr A. K. ATTWOOD

Assistant Manager: Mr J. P. F. KENNERLEY

Czechoslovakian Team Manager: Dr V. PALECEK

Hamilton Team Manager: Mrs C. E. TADEMA

Referee: Mr B. SHERIDAN

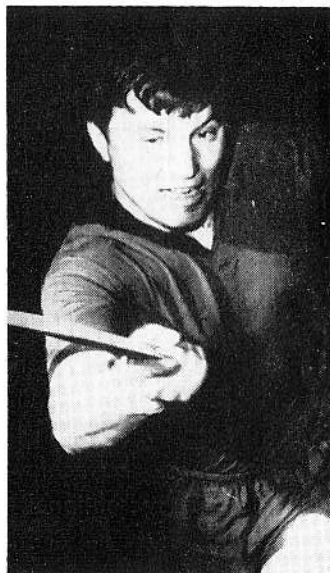
CZECHOSLOVAKIAN TEAM



MILAN ORLOWSKI

This player, who is 21 years old, is popular with spectators for his aggressive style of play and powerful forehand drives. He has a world ranking of 6th. He has just won the European men's singles crown.

He is noted not only for his singles wins, but also for his ability in doubles, where he has recorded many notable achievements.



JAROSLAV KUNZ

He is the senior member of the team, and is married with one child. He is noteworthy for his specialisation of back-hand play and back-hand blocking, which puts him in command of top-spin players.

By standing down in 1965 from representing his country for one year, he ensured his scholastic entry to college, where he subsequently graduated with a masters degree in transport engineering.

HAMILTON TYRE & BATTERY SERVICE (1973) LTD

Ward Street ——— Hamilton ——— Phone 82-444

HAMILTON'S LEADING SPECIALISTS

FOR ALL

GOODYEAR TYRES AND G.800 RADIAL STOCKISTS

For All

- ☆ DULUX PAINTS
- ☆ WALLPAPER
- ☆ FRAMED PICTURES

GUTHRIE BOWRON & CO.

90 COMMERCE STREET ——— FRANKTON

265 GREY STREET ——— HAMILTON EAST

CZECHOSLOVAKIAN TEAM



Miss ALICE GROFOVA

Alice is a brilliant 22-year-old player, and is a physical education student at the Comenius University of Bratislava. She has deservedly attained a world ranking of number three.

Alice is a complete all round player, being equally at ease with choppers or hitters. Her forehand drive is devastating and this is supplemented with a dangerous back-hand.



JOSEF DVORACEK

Josef is a 22-year-old locksmith who achieved fame in 1969 by beating Stellan Bengtsson in the European teams championship. He is a tall, heavily built player, who prefers to stand back from the table where his uniform back-hand and forehand strokes enables him to maintain long rallies.

He teamed with Alice Gorfova in the 1973 Sarajevo world championships to win the bronze medal in the mixed doubles.

MATCH PROGRAMME

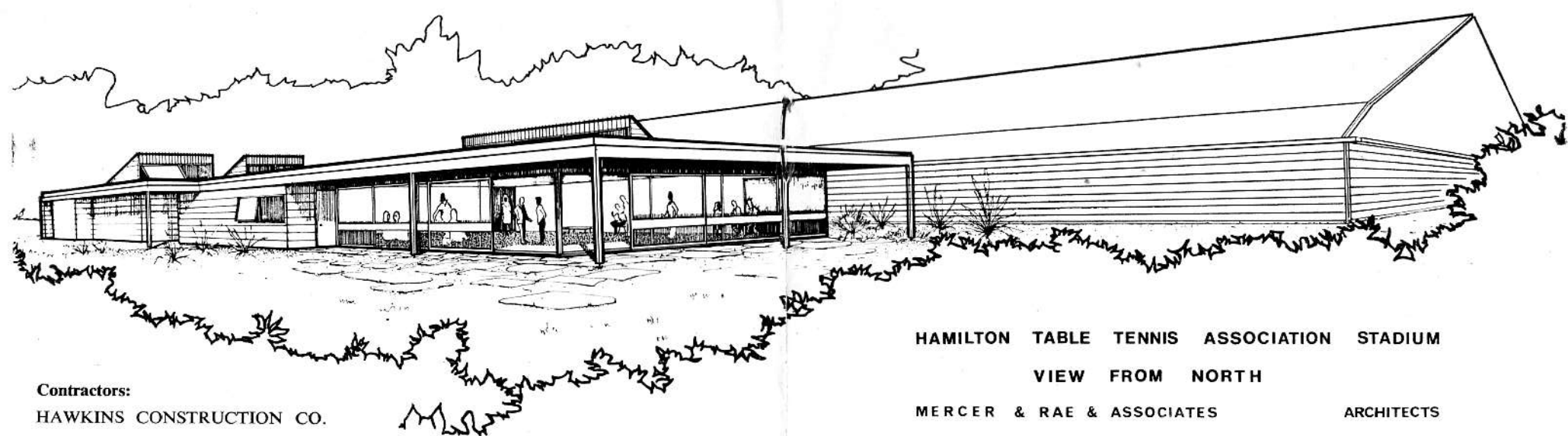
CZECHOSLOVAKIA

ALICE GROFOVA
JOSEF DVORACEK
JAROSLAV KUNZ
MILAN ORLOWSKI

HAMILTON

Miss YVONNE FOGARTY
BAIN M. ATTWOOD
PAUL R. PERRY
GAVIN R. SHEWAN

Event	Match	Umpire	Czechoslovakia	Hamilton	Games Scores			Match Results	
					1st	2nd	3rd	Czech.	Hamilton
1	MEN'S SINGLES	R. J. Rassie	J KUNZ	GAVIN	21/9	21/7		1	
2	MEN'S SINGLES	R. B. Penberthy	J DVORACEK	BAIN	21/8	21/18		1	
3	MIXED DOUBLES	E. R. Wells	A GROFOVA M ORLOWSKI	YVONNE-BAIN	21/6	16/21	21/6	1	
4	MEN'S SINGLES	R. J. Fraser	J DVORACEK	GAVIN	21/10	21/10		1	
LADIES D INTERVAL									
			angela A GROFOVA	C FRASER Y. FOGARTY	21/17	21/5		1	
5	MEN'S SINGLES	R. J. Rassie	M. ORLOWSKI	BAIN	21/4	21/5	3	1	-
6	LADIES' SINGLES	K. A. Fraser	A GROFOVA	YVONNE	21/12	21/5		1	
7	MEN'S DOUBLES	J. F. Stuart	J. Kunz J Dvoracek	BAIN PAUL	21/15	21/13		1	-
TOTAL									
8	EXHIBITION MATCH	B. Sheridan	M. ORLOWSKI	J. KUNZ	18/21	19/21			



Contractors:

HAWKINS CONSTRUCTION CO.

The Association's magnificent 11,800 square foot stadium, currently under construction at the corner of Victoria and Edgumbe Streets, has been made possible by the financial support of many firms and persons. Scheduled here are the firms which are materially assisting this vital project. The Association acknowledges its gratitude to these firms.

Of the total cost of \$110,000 players are contributing \$66,000; business firms \$25,000; and other subsidies and grants total \$20,000.

Adlite Signs Ltd
Allens Precast Concrete Ltd
ANZ Bank Ltd
Auto Brakes Ltd
Beggs-Wisemans Ltd
Braemore Jersey Stud
Brennan Panel Works
E. G. Buchanan
J. Hilary Carter
Chartwell Central Heating Ltd
Christies
Clare Electrical Services
Colemans Suzuki Centre (Waikato) Ltd
Claudelands Hire Service Ltd
Cochrane's Sport Centre
Commercial Union Assurance Company of N.Z. Ltd
Ellis & Burnand Ltd
Farmers Trading Co. Hamilton Ltd
Firth Industries Ltd
General Foods Corporation N.Z. Ltd
Goldex Paints Ltd
Hadley and de Luen Ltd

Hamilton Car Painters
Independent Broadcasting Company
Julian Tordoff Ltd
Liteweight Caravans Ltd
London Beauty Salon
Kevin McCarthy Menswear
Marac Finance Ltd
Monteith and Parker Ltd
Naylor Street Auto Services
N. Nobilo & Sons Ltd
N.Z. Motor Corporation
Frank Paviour Ltd
Percy's Lubrication Centre
Phillipps & Impey Ltd
Plastic Products Moulding Company
Rolls Industries Ltd
Southern Cross Industries Ltd
Tanner and Horrocks Ltd
Thomson & Ward Ltd
Turners & Fows Ltd
Waikato Barfix Ltd
Waikato Breweries Ltd
John Walker Printers Ltd

HAMILTON TABLE TENNIS ASSOCIATION STADIUM

VIEW FROM NORTH

MERCER & RAE & ASSOCIATES

ARCHITECTS

MEMBERSHIP OF BUILDING FUND

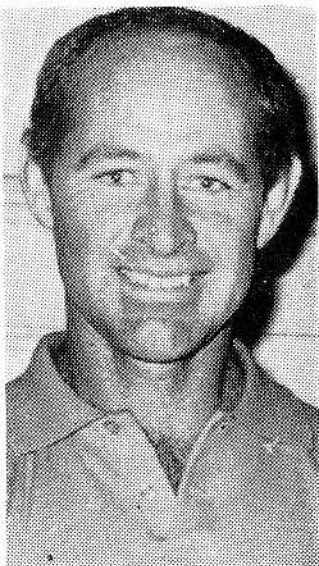
SCHEDULE OF BENEFITS

Total Donation over 3 years				Number of Playing Rights	Spectator Rights	Period of Rights (years)
\$60	-	-	-	1	-	5
\$100	-	-	-	1	1	7
\$300	-	-	-	2	2	10
\$600	-	-	-	3	3	10
\$1,000	-	-	-	3	3	15
\$1,500	-	-	-	4	4	20
\$3,000	-	-	-	5	5	30
\$15,000	-	-	-	10	10	40

YOU CANNOT AFFORD NOT TO BE A
MEMBER OF THE BUILDING FUND

For Full details ask any Association Official.

HAMILTON TEAM



GAVIN SHEWAN

He is a classical player who has successfully represented Hamilton in provincial, national and international tournaments for many years.

He effectively uses a pimped bat for defeding but when necessary his ability to attack is quite tremendous.

At the 1973 New Zealand championships he defeated in the final the long reigning senior men's titleholder V. N. Brightwell.



Miss YVONNE FOGARTY

Was in the New Zealand team which played in the World Championships in Stockholm, Sweden, in 1967, when she was only 15 years of age.

Earlier this year she was in the New Zealand women's team which shook the table tennis world by taking fourth place in the Asian championships in Japan.

Miss Fogarty is essentially an attacking player and relies on fast reflexes and bustling tactics, rather than actual shot play.

ROYAL OAK COFFEE LOUNGE

N.Z.I. Arcade :: Garden Place :: Hamilton

FOR HAMILTON'S BEST — BE OUR GUEST, AND ENJOY
THE PLEASANT SURROUNDINGS, FRESH FOOD AND QUICK
SERVICE.

MELGREN'S BIN SERVICES

For All Household and Commercial Clean-ups

HIRE A BIN TO PUT IT IN

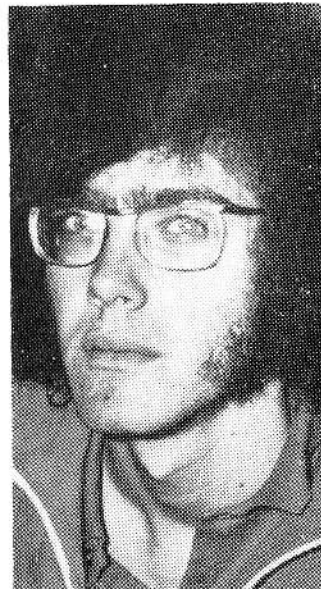
Sizes to Suit —

4 cu. yd. 6 cu. yd. 9 cu. yd.

— RING US FOR A QUOTE —

PHONES 57-172, 35-542

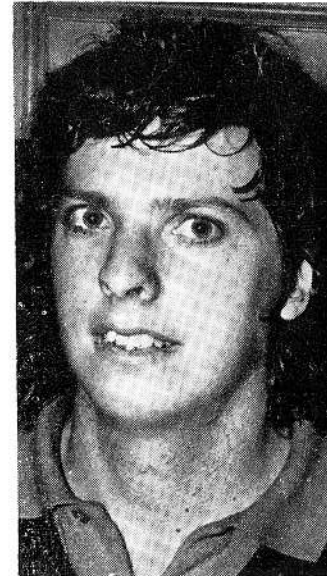
HAMILTON TEAM



B. M. ATTWOOD

A university student, he has represented Hamilton in senior and junior tournaments for many years.

He has beaten many of the dominions' top players at one time or another. With various partners he has won doubles titles and is perhaps better known for his capacity as a doubles player.



PAUL PERRY

He is making his debut for Hamilton in international matches in this contest.

His all round play and doubles ability has ensured his place in the team. His determination is reflected in his winning the 1973 New Zealand Men's Consolation in Tauranga. He is rapidly emerging as one of the harder players in Hamilton.

PLAYERS —

SUPPORT THE ASSOCIATION'S ADVERTISERS !!

R E L I A N C E

TRANSPORT (Waikato) LTD

FURNITURE REMOVALS

Around the Corner or Around the World

FULL PACKING AND UNPACKING — WITH INSURANCE ARRANGED

PHONE 492-904 HAMILTON
581 TE AROHA
56-463 TAURANGA

GRUBB & MORTENSEN LTD

PHONE 85-564

PHONE 85-564

557 Victoria Street :: Hamilton

COMPLETE STOCKISTS OF ALL
MENSWEAR REQUIREMENTS IN
CLOTHING AND MERCERY

☆ SEE OUR COMPREHENSIVE RANGE OF WINTER STOCK ☆

HAMILTON TABLE TENNIS ASSOCIATION

TABLE TENNIS CENTRE

An item long on the planning programme of the Association is rapidly approaching reality. It is the provision of our own handsome permanent home. It comprises a 9,400 square foot stadium that will contain twelve 40-foot by 15-foot playing areas, and amenities block of 2,400 square feet that provides for office, tournament control room, lounge, kitchen, store room, spacious entrance foyer, changing rooms, showers and toilets. The building, thoroughly designed by architects Mercer & Rae & Associates, to the standards set by the Association, is being expeditiously built by Hawkins Construction Co. on 2½ acres of Hamilton Domain Board land at the corner of Victoria and Edgecumbe Streets. The site is just over a mile from the Hamilton Post Office, and the immense building blends harmoniously with the pleasant surroundings of expansive grass swards, tree lined stream banks and wooded slopes.

The exterior of the building is sheathed in cedar stained vertical weatherboard, and on the gable ends with asbestos cement sheet. The two exterior walls of the lounge are formed in black anodised aluminium framed windows and sliding doors, giving a wide view of the park surroundings.

The lighting is of a high standard rarely seen in public buildings, and the intensity of 400 lux is being achieved with 110 twin 65 watt tube fluorescent fittings. The uniform standard will allow tables to be positioned anywhere in the stadium.

The close personal interest of the architect, and willing co-operation of the principal contractor and many sub-contractors, has seen a rapid advancement of the building to date, but shortages of a small number of essential materials may well delay completion of the project beyond its due date of mid-June.

HISTORY

The Hamilton Table Tennis Association is rapidly approaching its ruby jubilee, and this event will fittingly coincide with the red-letter day of the official formal opening of its stadium in 1975.

Early in its career the Association made a practice of accepting offers of staging international contests. Probably the first such match was that of the world famed pair of Barna and Bellak. The match was held in the Bledisloe Hall in 1938, with an admission charge of two shillings, which was a heavy charge when wages were about a shilling an hour. In the last decade Hamilton has hosted international matches with teams from Australia, England, Sweden, Hong Kong, Japan, and now Czechoslovakia. These tours maintain a wide public interest in the sport, and foster a greater participation in the sport. For the spectators the tourist matches have always provided "good value for money."

Throughout the years the Association has been ably represented by junior and senior players. Each season there has been some noteworthy achievement of a Hamilton player on the national scene. Names immediately coming to mind are Richard Lee, Gavin Shewan, John Dunn, Mrs Catherine Tadema, Mrs Merle Rolston, Bain Attwood, Maurice Eng and Ian Crookenden. Our central situation enables players to readily compete in a large number of tournaments, and our mixture of urban and rural areas provides for a well balanced administration.

BE A MEMBER OF THE BUILDING FUND — AND REAP THE BENEFITS

ACT NOW! TOYOTA IS IN DEMAND

The demand for the brilliant new Toyotas has been unprecedented. Toyota's reliability, swift performance and good looks have completely won the hearts of New Zealand motorists.

And now, production can hardly keep up with demand. If you want a new Toyota, you must act now. **See Wrightcars Toyota** before the waiting lists become too long.

Let Wrightcars give you full details and expected delivery times for the new Toyota Crown, Corona 1600, Corona 1800 Corolla Sedan, and the

NEW COROLLA COUPE SR

If you want a new Toyota you'll have to move fast. **To Wrightcars Toyota.**



Wrightcars TOYOTA

L.M.V.D.

PHONE 84-659 AFTER HOURS: 35-090, 37-512, 34-718
TRISTRAM STREET, HAMILTON (opposite Founders Theatre)

WINTER IS UPON US!

Get your Battery checked or replaced
by the Specialists —

HAMILTON TYRE & BATTERY SERVICE (1973) LTD

Ward Street — Phone 82-544 — Hamilton

BELLS RENTALS LTD

Modern canopied Trucks, Vans,
Utilities and Forklifts, 6 cwt to 8-ton

Move yourself with or without h.t. licence.
Unloading ramp, customer parking.

14 NORTON ROAD
HAMILTON

PHONE Bus. 74-506
Private 56-271 and 34-524