

WINSTONE LTD

1973

INTERNATIONAL  
TABLE TENNIS TOUR  
BY JAPANESE TEAM

JAPAN  
v  
SOUTHLAND

1 August 1973

SOUTHLAND TABLE TENNIS

ASSOCIATION Inc.

Souvenir  
Programme  
30 c

# John Edmond Ltd

For all your Building requirements

Wallboards

Locks

Electric Ranges

Shower Trays

Garage Doors

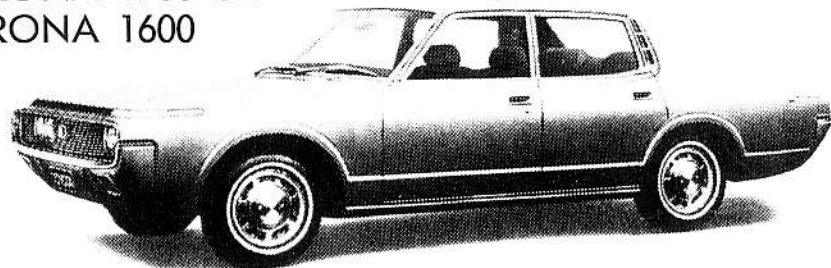
Decramastic Roofing supplied and fixed.

Phone 4514 :: Tay Street

## WRIGHTCARS TOYOTA

We have a full range of TOYOTA CARS to meet the requirements of all motorists.

CORONA 1700 SE  
CORONA 1600



CROWN AUTOMATIC  
CROWN MANUAL

COROLLA 1200  
COROLLA 1200 SL COUPE  
COROLLA 1200 S/W

Your Toyota Dealer is

## WRIGHTCARS TOYOTA

Dee Street Invercargill Phone 4109

*President's  
Welcome ...*



It is my privilege as President of the Southland Table Tennis Association to extend a very warm welcome to the Japanese Table Tennis Team.

We are fortunate to have the team opening their tour of New Zealand in Southland and we wish the players an enjoyable visit.

Two previous tours of New Zealand have been made by Japanese teams. T. Tanaka and I. Ogimura toured in 1957 and Misses K. Matsuzaki and K. Yamaizumi toured in 1960 with Southland being fortunate in being hosts to both tours.

It is eight years since we have seen overseas players in action and I can assure the public of world class table tennis.

Welcome to Invercargill and New Zealand and may your tour be a successful one.

RON GARRETT  
President.

ようこそ!!

日本の卓球選手の皆さんに  
「ようこそ! よくいうっしやしました」と  
と歓迎の言葉を申し述べること  
が出来ますことはサウス  
ランド卓球協会の会長として  
あります私の特権であります。  
貴チームがニュージーランド遠征の  
最初の試合をインヴァーカギルで  
行ってくれますことは我々にとり  
大変幸運なことです。と同時に  
この旅行が思い出多いもので  
あるようにとも念じています。  
私達の国へよくお出下さい  
ました。私達は皆さんを歓迎  
致します。そしてその旅が有意義な  
ものとなりますよう祈ってやみません。

敬具

*Ron Garrett*  
会長

# Bert Walker & Son Ltd

4 YARROW STREET - - - INVERCARGILL

For all your

## SPORTING EQUIPMENT

**Q.** WHAT IS A  
SOUTHLAND SAVINGS BANK  
CLUB ACCOUNT?

**A.** Clubs, societies, associations or any non-profit organisation may have a current savings account. Club Accounts receive current rates of interest and may be operated by cheque. To facilitate easier accounting, copies of account showing all transactions and cheque numbers are also available.



The bank that lives here.

Head Office: 25 Don Street, Invercargill.  
Telegraphic Address: 'Insbank'.  
P.O. Box 904. Telephone 87-029.

### N.Z. CHAIRMAN'S WELCOME

On behalf of all table tennis administrators and players in New Zealand I extend a warm welcome to the Japanese table tennis players embarking on a two weeks' tour of this country.

Japan is a top nation in table tennis. It has millions of players, and has since its first appearance in the world championships in 1952 won 29 out of a possible 75 world championship titles.

Though Japan currently has no world champion, it is a country with a magnificent and proud record, and I am sure the representatives Japan has sent to New Zealand this year will be worthy of the great nation, and provide spectators with thrilling play and exhibitions.

As chairman of the N.Z.T.T.A. I sincerely wish that the Japanese party enjoys its brief visit to this country. Might I add that this is the third visit we have had from Japan. The first was in 1957 when world champions T. Tanaka and I. Ogimura came, then in 1960 we had Misses K. Yamaizumi and K. Matsuzaka, also world champions.

It was my pleasure to be associated with both tours, and to enjoy, immensely, the expertise of the Japanese players. I can assure the public of N.Z., having seen the Japanese players in action in Nagoya, Japan, at the world championships in 1971, that these Japanese players will delight with their skills.

I sincerely hope that the tour will have a successful opening in Invercargill, and I wish the Southland Association maximum pleasure and support.

A. R. Harding,  
Chairman N.Z.T.T.A.



*forwarded  
and in 1973 a team of women  
was sent led by Ms Takeuchi  
no more*

### OFFICERS OF THE SOUTHLAND ASSOCIATION

Patron:	Mr J. Hughes
President:	Mr R. J. Garrett
Immediate Past President:	Mr N. F. Tapper
Vice Presidents:	Messrs N. F. Tapper, N. R. Peacock
Hon. Secretary:	Mr J. F. McMurtrie
Hon. Assistant Secretary:	Mr I. Cundall
Hon. Treasurer:	Mr P. Harding
Hon. Auditor:	Mr W. K. Drummond A.C.A.
Hon. Solicitor:	Mr M. R. Skipworth L.L.B.
Life Members:	Messrs G. G. Isitt, S. Robson
Executive Committee:	Messrs N. Lang, N. McDonald, V. Domanski, R. Marsden, S. Zwetsloot, C. Jakeway.

# NOW AT... **RICES**

SOUTHLAND'S HOME APPLIANCE SPECIALISTS

the first fully featured  
electronic calculator

**UNDER \$100**

LOOK AT THESE FEATURES

SANYO CX-8001.

capacity: 8 digit read out. Performs basic calculations, constant calculations, power calculations and mixed calculations. The Sanyo CX-8001 has a recall facility and the only storage facility of any non-memory calculator. Operates from mains or batteries. The ideal personal calculator.  
Weight: 11oz. (290g).  
Dimensions: 1 1/4" x 3 3/4" x 5 1/8"  
(37 x 84 x 14.9cm).

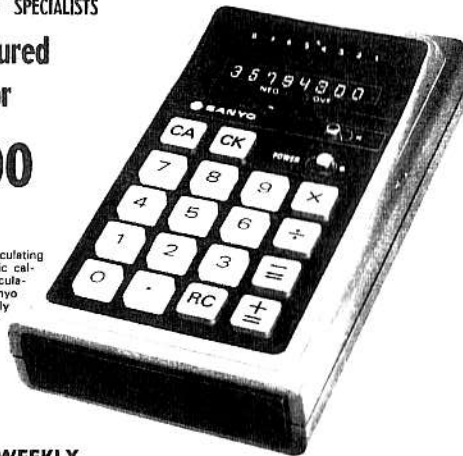
**\$99**

OR \$10 DEPOSIT & \$1 WEEKLY

Think metric, see **SANYO**  
what the future holds, today.

**RICES**  
SOUTHLAND'S HOME APPLIANCE SPECIALISTS

Showrooms: Cambridge  
Place & Annex, Mersey  
St., Invercargill, Phone  
86-085; Main St., Gore,  
Phone 6106.



# Wilsons Furniture

Upper Yarrow Street

Call and see our large selection of

FURNITURE ● FLOORCOVERINGS  
and SOFT FURNISHINGS

... so ping pong along to WILSONS  
for Lower Prices.

Phone 76-197

the mark of fine Furniture



# Meet the Japanese Team

Manager

Mr Takashi Nomura Age 58. Occupation Professor  
of Waseda University.

Men  
Players

Mr Toshiaki Furukawa Age 26. Office clerk of Ogimura-  
Shoji Company.

A "shake hand" grip defensive player who has been described as the world's most acrobatic player, with a vicious chop defence and an exponent of the high lob. He has defeated many of the world's best players and has had victories over former world champions Bengtsson of Sweden and Hasegawa of Japan.

Mr Keitaro Sugimoto Age 24. Office clerk of Nihon  
Takkyu Co. Ltd.

A "pen grip" attacking player who has won his place in this team with victories over such well-known Japanese players as Tasaka, Yamuchi, Takashima and Abe.

Women  
Players

Miss Yoshiko Takase 23 years of age and a clerk of  
Taisei-shinyokomiao. Ranked No. 2 in Japan. A "pen  
grip" style player, being a member of the Japanese  
delegation to the last world championships at Sarajevo,  
Yugoslavia. She is an allround type player with a  
backhand attack.

Miss Kasumi Inaguma 21 years old office clerk of Brother  
Co. Ltd. She is a "shake hand" grip player and one of  
Japan's most promising players.



WHATEVER THE SPORT YOU PLAY YOU WILL BE

SURE TO FIND A BOOK  
ABOUT IT IN THE LARGE  
SELECTION OF

SPORTING BOOKS

AT

**Whitcoulls**

(FORMERLY WHITCOMBE & TOMBS LTD)

64-66 DEE STREET INVERCARGILL



### Philips electronic dictation machine 98

The styling of this sophisticated machine is in keeping with the best desk-top computers and the configuration of the controls makes it one of the easiest machines to use. Using the Philips Mini-cassette, the 98 is the top of the highly successful Philips dictation-system.

Available from

**CRAIGS**

TAY STREET

TELEPHONE 87-182

## Meet the Southland Team



Photo B.A. Foster

**BRYAN A. FOSTER**, Otago. Invited to play for the Southland team. Foster is undoubtedly the South Island's greatest ever player. Winner of New Zealand men's singles title 1966 and 1968 and men's doubles from 1968 to 1971. Bryan represented New Zealand at World Championships in 1961, 1967 and 1973. Bryan has only recently returned from 18 months overseas including representing his country at the 1973 World Championships in Sarajevo.

**JOHN LELLIOTT**. Southland's No. 1 player since arriving from Christchurch in late 1971 previously gaining Canterbury 'B' status. Mainly a defensive player John has played seven games for Southland.

**RON GARRETT**. A penhold player, Ron has represented Southland on forty-seven occasions since 1966. His attacking game has won him the Southland open singles title once and the residential title on three occasions.

**PAUL WYLIE**. Another Canterbury import playing his first season in Invercargill. A defensive player, this will be Paul's first match for Southland.

**GRAEME CLENT**. An attacking player, Graeme has played more than forty games since first representing Southland as a junior in 1958.

**Miss DAPHENE TAPPER**. Still a junior Daphene has played fourteen times for Southland. Top women player in Southland this season.

**Miss DENISE HESSON**. Also a junior Denise first represented Southland this year playing in three games.

**Mrs DAWN BENSEMANN**. Represented Southland this year for the first time. Won the New Zealand Bracelet title in 1954 while representing Nelson.

**Mrs NOLA FALCONER**. First represented Southland in 1963 and has played more than twenty games since. Top women player in Eastern Southland for many years.

# WINSTONE LTD — INTERNATIONAL TABLE TENNIS TOUR BY JAPANESE TEAM

## Match Programme

### JAPAN

### MEN

T. Furukawa

K. Sugimoto

### WOMEN

Miss K. Inaguma

Miss Y. Takase

	EVENT	JAPAN	SOUTHLAND	SCORES			RESULTS	
				1st game	2nd game	3rd game	Japan	South land
1	MENS SINGLES		1					
2	WOMENS SINGLES		1					
3	MENS SINGLES							
4	WOMENS SINGLES							
5	MENS DOUBLES							
6	WOMENS DOUBLES							
7	MENS SINGLES							
8	WOMENS SINGLES							
9	MENS SINGLES							
10	WOMENS SINGLES							
11	MIXED DOUBLES		1					
12	MIXED DOUBLES		1					
13	EXHIBITION							
14	EXHIBITION							

### SOUTHLAND (Invitation)

### MEN

B. A. Foster

J. Lelliott

R. J. Garrett

P. Wylie

G. Clent

### WOMEN

Miss D. Tapper

Miss D. Hesson

Mrs D. Benemann

Mrs N. Falconer

### NOTE

Two tables shall be used for events 1 - 12 and one table for exhibition matches. A short interval shall be taken after match 6.

Take the worry  
out of  
your next  
HOUSEHOLD REMOVAL

Contact

***Empire  
Forwarding  
Co. Ltd***

Telephone 82-966

Leven Street

Invercargill

**Experienced Packers and Removalists**

**MILLS PHARMACY**

***BIGGER BETTER BRIGHTER***

**"OUR BUSINESS IS BUILT ON SERVICE"**

---

**MILLS PHARMACY**

***Cnr. DON and KELVIN STREETS***

## **HISTORY OF THE SOUTHLAND ASSOCIATION**

The Association was formed in 1935 under the name of the Invercargill Table Tennis Association and became affiliated to the N.Z. Association in 1937. Mainly responsible for table tennis administration in early years was Mr S. Robson a present Life Member.

In 1937 there were 41 teams in the competition from 18 clubs with 160 members. Table tennis numbers declined in latter years mainly due to the war. Southland held the South Island Championships in 1939 with Auckland Frank Paton being the winner. It has now held the South Island Championship six times.

During the 1940's and early 50's the late Tom Breayley dominated the table and also served the administration side as President.

Victor Barna and Richard Bergmann toured in 1949 followed by the Rowe twins in 1953. In 1957 and 1960 Japanese teams toured followed by an Australian team in 1964.

The 1950's saw the emergence of John Catto as a major force in Southland table tennis winning N.Z. under 16 and 18 titles from 1952 to 1955. Late 50's and early 60's Southland were well represented by Catto and N.Z. ranked players in R. Mercer and R. Foster.

Since its inception the Association rented several premises before finding a home at Surrey Park Indoor Basketball stadium in 1958, changing to the Southland Kennel Association Hall in 1964. Our own hall was opened in the 1971 season and although holding 4 tables it is debt free and plans are underway for extensions.

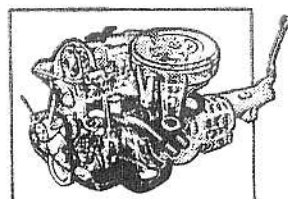
Today Southland table tennis is on the upwards path with over 300 players competing regularly.

# H.E.MELHOP LIMITED

## DATSUN 180 B.



Datsun 180B. Four years of planning, researching and testing. Designing and engineering. The new Datsun 180B. 1800 c.c. overhead cam engine with alloy wedge head. 105 b.h.p., twin barrel carburettor, power assisted brakes, 4 wheel independent suspension. Datsun 180B. More than just a beautiful body.



## MORE THAN JUST A BEAUTIFUL BODY.

In order that product improvements may be introduced at any time L.M.V.D. prices and specifications are subject to change without notice.

BUY  
YOUR  
GROCERIES  
FROM



## RESULTS OF PREVIOUS JAPANESE TOURS TO SOUTHLAND

1957

On this occasion Southland were hosts to Toshiaki Tanaka - world champion in 1955 and 1957 and the team manager Mr H. Shimizu. Ichiro Ogimura who also toured was ill and did not travel to Invercargill.

W. Hay and K. Horner each took a set off Shimizu.

Result:

Tanaka beat D. Kidd 21-9, 21-14

beat J. Catto 21-12, 21-18

Shimizu beat W. Hay 21-18, 19-21, 21-10

beat K. Horner 21-16, 22-24, 21-14

Tanaka and Miss B. Smith beat Shimizu and Miss M. Catto

19-21, 21-19, 23-21.

1960

Southland were hosts to world singles champion Miss K. Matsuzaki and doubles champion Miss K. Yamaizumi. On this occasion Southland imported two top New Zealand players in Miss J. Williamson and Mrs J. Magorian.

Result:

K. Yamaizumi beat J. Williamson 23-21, 21-18

beat J. Magorian 21-5, 21-9

K. Matsuzaki beat J. Williamson 21-16, 21-8

beat J. Magorian 21-5, 21-7

Matsuzaki and J. Catto beat Yamaizumi and R. Mercer 23-21, 21-16

H. Shimizu (manager) drew with R. Foster one set each.



THINKING OF FINANCE?

THINK OF . . .

## **SOUTHLAND DEVELOPMENT CORPORATION LTD**

IF YOU HAVE MONEY FOR INVESTMENT

IF YOU REQUIRE FINANCE

Consult — **SOUTHLAND DEVELOPMENT CORPORATION LTD**

H. & H. Buildings - - 52 Kelvin Street,  
Invercargill.

H. & H. BUILDINGS, 52 KELVIN STREET,  
INVERCARGILL.



## **CHANDRIS LINES**

**OFFER YOU 4 MAGNIFICENT  
SOUTH PACIFIC CRUISES**

**S. AUSTRALIS PACIFIC PARADISE CRUISE** - 22nd to 31st December, 1973

**H.M.S. PATRIS FUNCAPE CRUISE** - 17th December to 10th January, 1974

**H.M.S. PATRIS SUNSEEKER CRUISE** - 10th January, 1974 to 31st January, 1974

**H.M.S. BRITANIS SEACAPE CRUISE** - 17th January, 1974 to 7th February, 1974

On these voyages, you will visit

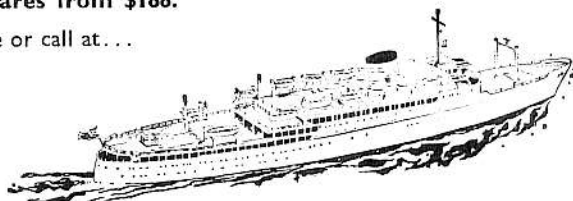
**VILA, SUVA, APIA, PAGO PAGO, LAUTOKA and NUKUALOFA**

This is your opportunity to have one of the most relaxing holidays of your life.

Leave care and worry behind.

**Fares from \$188.**

For itineraries and brochures, telephone or call at...



**WATSON'S WORLD WIDE TRAVEL SERVICE**

LAND · SEA · AIR · TRAVEL TAY STREET, INVERCARGILL Telephone 3099

MAIN STREET, GORE Telephone 5099

## **WINSTONE LTD — INTERNATIONAL TABLE TENNIS**

### **TOUR BY JAPANESE TEAM**

RESULTS

August 1	v	Southland
" 2	v	Otago
" 3	v	Canterbury
" 5	v	New Zealand at Wellington
" 6	v	Wanganui
" 7		Exhibition at Taumaranui
" 8	v	Hamilton
" 10	v	Northland
" 12	v	New Zealand at Auckland

Japan	Opponents

## **WHEN YOU REQUIRE DRINKS**

**TRY US**

*Southland Owned and Operated*

*Sold Throughout Southland*

*We supply to Shops, Clubs and Canteens*

## **BARNONE DRINKS**

**PHONE 82-460.**

If you are interested in playing table tennis kindly contact any of the following clubs:-

Eagles	Mr N. McDonald	Phone 68761
Kennington	Mrs G. Henley	Phone 24818
Olympic	Mr C. Jakeway	Phone 86944
United	Mr N. Lilley	Phone 75194
Woodend	Mr R. Garrett	Phone 80761
Woodlands	Mr N. Lang	Phone 45K

---

WINSTONES LTD

HAVE PLEASURE IN SPONSORING

THE JAPANESE TEAM

TOUR IN NEW ZEALAND

---

The Southland Table Tennis Association are most grateful to the following businesses for their support:-

Bar None Cordials Ltd

Bert Walker & Son Ltd

Empire Forwarding Co. Ltd

G.H.B.

Invercargill Licensing Trust

John Edmond Ltd

H.E. Melhop Ltd

Mills Pharmacy Ltd

Rice Refrigeration Ltd

Southland Development Corporation Ltd

Southland Savings Bank

J.E. Watsons Travel

Whitcouls Ltd

Wilsons Furniture

Winstones Ltd

Wrightcars