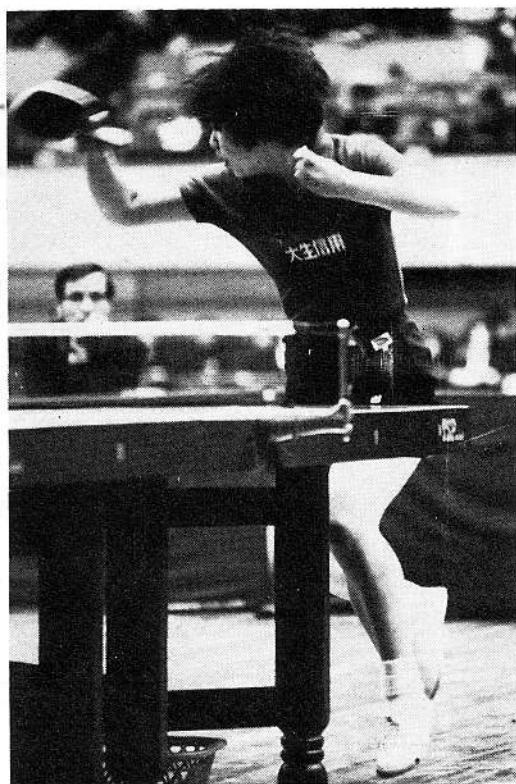


野村 志
 Takashi Nomura
 WELLINGTON TABLE TENNIS ASSOCIATION

JAPAN v NEW ZEALAND

Winter Show Building, Wellington

Sunday, 5th August, 1973



Miss Yoshiko Takase (Japan)

杉本 有正 太郎
 Keitaro Sugimoto

WINSTONE
 LTD.
 INTERNATIONAL
 TABLE TENNIS
 TOUR
 1973

Official
 Programme
 20c

Yoshiko Yoshijawa
 吉住 由子

Ryoko
 箱根 力子
 Kazumi Inagawa

Wellington Table Tennis Association

OFFICERS

Patron: The Mayor of Wellington, Sir Francis Kitts.

President: Mr T. A. McPhee.

Vice-Presidents: Misses B. Frazer, N. McMaster, M. A. Ogle; Mrs E. Black; Sister M. Matthew; Rev. Father P. Minto; Messrs. C. S. Bradwell, R. W. L. Darroch, S. H. Hill, D. Hughes, N. A. Mackay, D. Morrish, J. McFarlane, K. R. Pratt, E. W. Tindill, C. C. Watt, K. C. Wilkinson.

Life Members: Messrs. H. D. Kennedy, D. Hayvice, C. F. Stanwell, T. S. Williams, W. S. Jopson, D. R. McGregor, I. L. Houghton.

Hon. Secretary: Mr A. F. Stanley.

Hon. Treasurer: Mr N. M. Flynn.

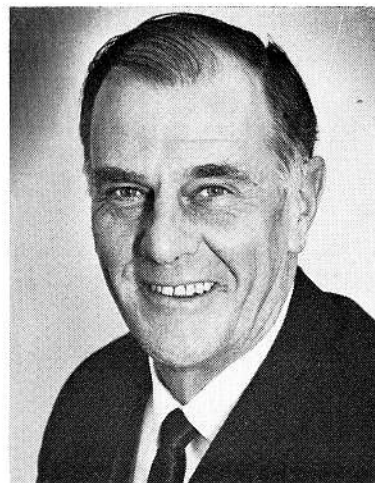
Hon. Auditor: Mr A. Dean, ACA.

Hon. Solicitor: Mr J. H. Oakley, LLB.

Executive Committee: Mr D. R. McGregor (Chairman), Mr I. L. Houghton (Deputy Chairman), Mrs P. Dean, Mrs L. Foster, Messrs. P. Coory, C. Harkness, B. J. Hearfield, D. Hollis, G. B. Jourdain, B. D. Kennedy, C. B. Lockhart, I. L. Moffat, A. D. Pilling, G. R. Saunders.

Recording Secretaries: Mr C. Purcell (A-B grades), Mrs K. Kelly (C-D grades), Mr C. W. Brown (E-H grades).

A MESSAGE FROM OUR SPONSORS



Mr D. P. Winstone

Managing Director

WINSTONE LIMITED.

New Zealand Table Tennis Association

OFFICERS

Patron: His Excellency the Governor-General, Sir Denis Blundell, G.C.M.G., K.B.E.

President: Mr J. E. Stewart.

Immediate Past President: Mr R. J. Rassie.

Vice-Presidents: Messrs. A. K. Attwood, K. A. Fraser, I. L. Houghton, V. H. Hurrey, A. B. McCallum, F. J. O'Gorman, R. W. Owen, R. J. Rassie, N. H. Tizard, G. V. Wilkinson.

Hon. Secretary: Mr K. C. Wilkinson.

Hon. Treasurer: Mr S. F. Miller.

Hon. Auditor: Mr A. Dean, ACA.

Hon. Solicitor: Mr K. F. Hoggard, LLB.

Executive Committee: Mr A. R. Harding (Chairman), Mr R. J. Menchi (Deputy Chairman), Mrs P. Dean, Miss J. E. Brown, Messrs. R. Angell, P. F. Bargh, L. E. Bouzaid, R. J. Magee, K. L. Pointon, J. W. S. Stevenson.

New Zealand Selectors: Messrs. R. J. Menchi (convenor), A. B. McCallum, N. H. Tizard.

It is my personal conviction, and one shared by all Winstone Directors, that there is no better way to achieving a healthy environment in the community than through active participation in recreational sport.

For this reason, we have always gladly given every encouragement to the administrators of sporting bodies who so willingly give of their own time in pursuit of this ideal.

Our pleasure in giving financial assistance to this tour by our Japanese friends, is heightened by the knowledge that whilst the competition may be intense, undoubtedly the participants will develop lasting bonds of friendship which will enhance mutual understanding between the two countries.

D. P. Winstone

Research Makes the Difference

SONY®

- VIDEO CAMERAS, RECORDERS, MONITORS
- COLOUR VIDEO-CASSETTE EQUIPMENT
- OFFICE DICTATING MACHINES
- LANGUAGE LABORATORY EQUIPMENT
- STEREO RECORDERS, HI-FI EQUIPMENT
- RADIOS, MICROPHONES, TAPE

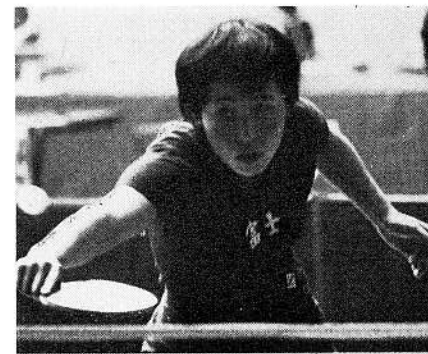
Distributed and Serviced in New Zealand by

H. W. CLARKE (NZ) LTD
P.O. Box 1693
Wellington

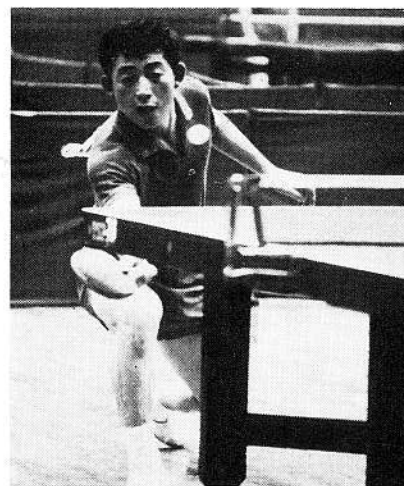
MEET OUR VISITORS



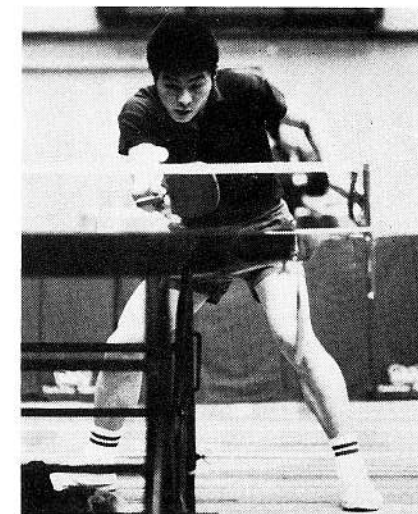
Mr **TAKASHI NOMURA**, aged 57, is the manager. He is a professor of physical education at Waseda University and a former Japanese representative player.



Miss **KASUMI INAGUMA**, is 21 years of age. She is a tennis-grip player but is not ranked in Japan. Miss Inaguma, however, is said to have a great future in the sport. At the time this programme was published, she was unbeaten on the tour of Australia.



TOSHIAKI FURUKAWA, aged 26, A clerk, Furukawa is the No. 1 player in the team and competed in the world championships at Nagoya, Japan, in 1971. Reports from Australia, where he competed prior to coming to New Zealand, describe him as a tennis-grip player with a remarkable lobbing defence. The secretary of the Australian Table Tennis Association says of Furukawa that he is "the best acrobatic defender in the world, absolutely fantastic—he will amaze and delight New Zealand crowds."



KEITARO SUGIMOTO, aged 24, is a pen-grip player with a powerful over-the-table attack. At the time that this programme went to press Sugimoto had suffered only one loss in the course of the Australian tour. This was to Paul Pinkovich, but he reversed the result in the test.

MEET OUR VISITORS (continued)

Miss **YOSHIKO TAKASE**, aged 23, is the No. 2 player in Japan and is a clerk. She was a member of the Japan team at the world championships in Sarajevo, Yugoslavia, this year. A pen-grip player, Miss Takase was runner-up

in the Japan singles championship, and is described as a player of remarkable talent, especially in control of the half-volley, and she has a fierce forehand attack.

(See front cover illustration)

AND MEET THE NEW ZEALAND TEAM

Miss **ANN STONESTREET**, Auckland, aged 19, won the New Zealand women's title in 1971 and 1972. She was a reserve for the New Zealand team which two years ago toured Australia and then played in the Commonwealth championships in Singapore and the world championships in Japan. After winning the New Zealand title in 1971 she declined an offer of coaching in South Korea, but went to Australia at her own expense to be coached by the South Korean, Park Sung-in.

Last year she represented New Zealand against the visiting team from The People's Republic of China and also played for New Zealand in the Asian championships in Jakarta. This year she was a member of the New Zealand team which competed in the Commonwealth tournament in Cardiff and the world championships in Sarajevo, Yugoslavia. A student teacher, Miss Stonestreet holds the No. 1 women's ranking in New Zealand.

Miss **YVONNE M. FOGARTY**, Hamilton, aged 21, was in the New Zealand team which competed in the world championships in Stockholm, Sweden, in 1967 when she was 15 years of age. She played for the New Zealand team which beat Australia in New Zealand in 1969 and was a member of the New Zealand team which two years ago toured Australia, played in the Commonwealth tournament in Singapore and in the world championships in Nagoya, Japan. She won a women's open tournament in Hong Kong in 1971, and was a member of the New Zealand women's team which won the Silver Medals at the Commonwealth tournament. Last year she represented New Zealand against the visiting team from The People's Republic of China.

This year Miss Fogarty played for New Zealand at the Commonwealth

championships in Cardiff and the world championships in Sarajevo. At the Commonwealth tournament she reached the semi-finals of the women's singles and was ranked fourth in the Commonwealth as a result of her fine results in the team and individual events. This is the highest ranking ever achieved by a New Zealander on an international ranking list.

GARY B. MURPHY, Hamilton, aged 24 years. He won the New Zealand singles in 1970 and was runner-up to Richard Lee in 1971. Murphy was a member of the New Zealand team which two years ago played in Australia, participated in the first-ever Commonwealth championships (held in Singapore) and he represented New Zealand in the world championships in Nagoya, Japan.

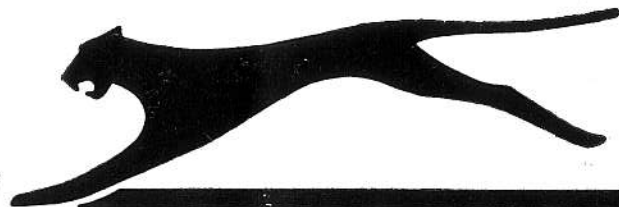
Murphy was ranked No. 3 in New Zealand in 1972 and was a member of the New Zealand team which took part in the Asian Championships at Jakarta. He also represented New Zealand in matches with The People's Republic of China team. This year he won the North Island singles title. A product of the Hutt Valley, Murphy is 6' 2" and is a physical education instructor.

ALAN R. TOMLINSON, Auckland, has had a long and illustrious career in New Zealand table tennis. He played for New Zealand against the visiting Japanese team of Ogimura and Tanaka in 1957 and in the intervening years won the New Zealand men's title in 1959, 1964, 1969 and 1972. He was a member of the New Zealand team which competed in the 1971 world's championships in Nagoya, Japan, and last year was a New Zealand representative at the Asian championships in Jakarta.

Tomlinson, who will captain the New Zealand team on this occasion was last year ranked No. 1 in New Zealand.

TABLE TENNIS THE INTERNATIONAL SPORT

WHEREVER PLAYED
YOU WILL FIND . . .



Slazenger

BATS

BALLS

COVERS

NETS

Available from your Sports Dealer

MATCH PROGRAMME

In accordance with international procedure, the draw will be made prior to the commencement of the contest.
The names of players, number of games and the order of play will be announced.

JAPAN
TOSHIAKI FURUKAWA
KEITARO SUGIMOTO
Miss KASUMI INAGUMA
Miss YOSHIKO TAKASE

NEW ZEALAND
ALAN TOMLINSON
GARY MURPHY
Miss ANN STONESTREET
Miss YVONNE FOGARTY

EVENT	JAPAN	NEW ZEALAND	SCORES			RESULTS	
			1st Game	2nd Game	3rd Game	N.Z.	Japan
1							
2							
3							
4							
5							
6							
7							
8							
9							
10							

Contest Manager: Mr I. L. HOUGHTON

Exhibition Matches 1. v. Scores:

2. v. Scores:

Made in N.Z.



Sports shorts have got to be tough and strong and easily washable and the right colour for your game. Standfast sports shorts are, naturally,

But they're more. They're cut with more than just comfort in mind they're made for *action*.

Play harder run faster do better in **STANDFAST** sports-cut shorts, and **STANDFAST** softball pants.

Standfast
SPORTSWEAR

It's the shorts' cut that counts

COLLINS MOTORS LTD.

Cnr. HALL & RIDDIFORD STS.

For First Class

- MOTOR REPAIRS
- LUBRICATION and
- TYRE REPAIRS

Warrant..of...Fitness

PHONE	PHONE
894-250	894-250

*Interested in playing
table tennis?*

JOIN A CLUB

Ring 893-394 (evenings)
for details.

PREVIOUS JAPANESE TEAMS IN NEW ZEALAND

(by I. L. HOUGHTON)

This current Japanese table tennis team is the third to tour New Zealand. In 1957 Toshiaki Tanaka and Ichiro Ogimura made a momentous visit and then in 1960 we welcomed Miss Kimiyo Matsuzaki and Miss Kazuko Yamaigumi.

Although table tennis had for many years been extremely popular in Japan it was not until 1952 that Japanese players took part in the World Championships which were first contested in 1927. At the World Championships in Bombay in 1952 the European table tennis world was shocked when the Japanese player S. Stoh, using a crepe rubber bat and playing pen grip, clinched the men's singles title.

In 1953 the Japanese did not take part in the World Championships but they were back and dominant in 1954, 1955, 1956 and 1957. In these years Ogimura won the men's singles in 1954 and 1956 and Tanaka took the title in 1955 and 1957.

The New Zealand team of Bob Jackson, Murray Dunn, Gary Frew and Owen Jaine, which attended the 1954 World Championships, passed on to local players details of the speed, power and agility of the Japanese players and the specialised types of sponge rubber they used on their bats, but being told is in no way comparable with seeing for oneself and the 1957 visit by the two greatest players in the world, playing a type of table tennis never seen before by the local table tennis public, created tremendous public interest.

Sensational opening

The tour opened sensationally when, in a contest with Auckland, Alan Tomlinson beat Ogimura and Bob Jackson beat Tanaka. Then on the following evening at Hamilton, Bob Jackson, playing as a guest for Waikato, went down to Tanaka but defeated Ogimura. Perhaps the main reason for these remarkable upsets was the bat developed by Bob Jackson on his return from the 1954 World Championships. Today, bats must comply with a rule, brought into effect in 1959, which states that a bat must be covered with pimpled rubber or with pimpled rubber over sponge, with a total allowable thickness of 4 millimetres on each side of the blade.

Prior to 1959 there were no restrictions on the type of rubber or thickness and the Jackson-type bat was noted for the use of black industrial rubber on the backhand to a thickness of approximately $\frac{1}{4}$ ". On the forehand blade Jackson himself used grey sponge rubber to a thickness of approximately $\frac{1}{2}$ " whilst Tomlinson used the Japanese Yasaka Rubber.

The World champions, Ogimura and Tanaka, devised playing tactics which enabled them to beat Jackson and Tomlinson in future meetings, but they always showed a healthy respect for any ball played to them from the black rubber on a Jackson-type bat.

Ogimura and Tanaka played 26 contests in a month, visiting virtually all registered table tennis Associations in New Zealand. The highlight of all their matches was the concluding exhibition singles between the two visitors. This was preceded by a five or ten minutes demonstration of 'Japanese Practice,' being a sequence of training rallies at high speed which amply demonstrated the champions' ability and control. In the seasons directly following the tour by Ogimura and Tanaka, 'Japanese Practice' became a regular training routine for New Zealand players.

This tour completed the conversion, started by Bob Jackson, of New Zealand table tennis from the old style pimple bat play to the modern aggressive sponge bat game of spin, hit and counterhit.

Women's world champion

Three years later, in 1960, the current world women's singles champion, Miss Kimiyo Matsuzaki, accompanied by Miss Kazuko Yamaizumi, visited these shores. This was the only time a winner of the world's women's singles has ever visited New Zealand.

Whereas Ogimura and Tanaka had shown us speed of foot, power and aggressiveness, the very attractive Kimiyo Matsuzaki and Kazuko Yamaizumi exhibited a style of table tennis that showed speed of foot, power and grace. The world champion woman appeared almost to float across the floor as her feet soundlessly sped around the playing area.

Again, the highlight of each contest was the exhibition match between Matsuzaki and Yamaizumi which also featured 'Japanese Practice.'

This tour created almost as much interest as the 1957 tour and showed our New Zealand women table tennis players that women's table tennis could be played in a fast aggressive style similar to that played by men.

Now, thirteen years later, this latest tour by a Japanese team of men and women will undoubtedly serve as another important milestone in the progress and development of New Zealand table tennis.

Previous Japanese teams in Wellington

In 1957 I. Ogimura and T. Tanaka played the Wellington team of M. L. Dunn and J. S. Crossley. During the evening, apart from the men's singles and doubles matches, a mixed doubles match was included in the programme in which Ogimura and Miss V. Cousins played Japanese team manager H. Shimizu and Mrs T. McGregor. Three weeks later Ogimura and Tanaka met the New Zealand team of R. V. Jackson, A. R. Tomlinson and B. A. Foster, at Wellington.

In 1960 Misses Matsuzaki and Yamaizumi played a Wellington team comprising Mrs P. Dean, Mrs T. McGregor and Mrs V. Smythe. They played a test at Lower Hutt against New Zealand's Miss Barbara Packwood, Miss Joyce Williamson and Miss Neti Davis. This was the first international contest played by Miss Davis, now Mrs Traill, who has since played many times for New Zealand.

Table Tennis Bats from Japan

NITTAKU BLUE RIBBON \$6.25

NITTAKU T.T. BALLS .22c each

(as used in the World Championships)

Many other Bats, Posts, Nets, available from

THE SPORTS DEPOT

(Witcombe & Caldwell Ltd.)

45 WILLIS STREET — WELLINGTON

BLACK, WHITE & GREY CABS LTD.

150 ADELAIDE ROAD — WELLINGTON

— **THE CAPITAL CITY'S LARGEST FLEET** —

PROMPT, COURTEOUS SERVICE

WEDDINGS AND TOURS A SPECIALTY.

59-900

PHONE

59-900

THE GREATEST NO-RISK INVESTMENT IN THIS COUNTRY TODAY!

Post Office

NATIONAL DEVELOPMENT BONDS

A HOME OF ITS OWN

After twenty years' fund-raising the Wellington Table Tennis Association has realised its long held ambition of owning its own stadium. Completed in October of last year, and costing \$58,000, the stadium is sited in Alexandra Road, Newtown, and provides unexcelled playing conditions and amenities for those who use it. There are nine tables, change rooms, hot and cold showers, a kitchen, and a lounge where players may relax between games.

The stadium is used for the Association's summer and winter inter-club competitions, and is also available for the use of members of the newly-formed Wellington Club. Membership of the Club is open to any person (whether or not they already belong to a club) and, on payment of an entrance fee and an annual subscription, a key is provided to enable each member to call at the stadium and make use of the facilities at any time he or she wishes—as long as it does not clash with an Association fixture or tournament.

Non-members interested in joining the Wellington Club are offered five

alternative forms of membership: Senior, Junior (under the age of 18 years), Mid-week (Monday to Friday inclusive), Family (a special concession rate) and Life Membership.

Particulars of the Club and information regarding fees etc. may be obtained from the Association's secretary, Mr A. F. Stanley (phone 893-394 residence). He would also welcome enquiries regarding 'Clubs to join' (where a person is interested in taking up the sport—either competitively or socially) and from Government departments, business houses and other organisations interested in entering an interclub team in the summer or winter competitions.

C. ITOH & CO. (N.Z.) LTD.

(ITOCHU SHOJI KAISHA LTD.)

The Total Business Company — Import & Export

We take great pleasure in welcoming the Japanese Table Tennis team to New Zealand and extend our very best wishes for an enjoyable tour in this country.



**SAFEST DRINK
ON THE ROAD
LEMON
AND
PAEROA**

