

ROTHMANS INTERNATIONAL TABLE TENNIS



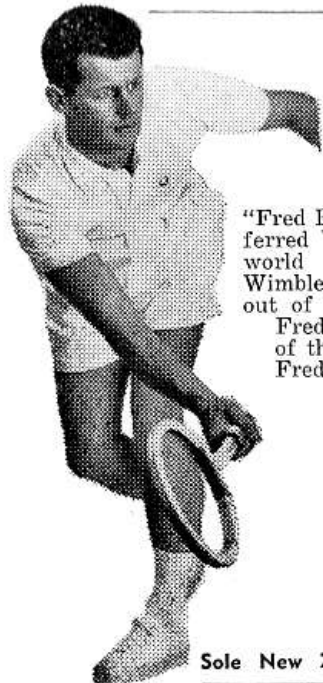
NEW ZEALAND TOUR

BY

DENNIS NEALE & STUART GIBBS

OF

ENGLAND



Created by a Champion

"Fred Perry tennis wear preferred by famous names the world over. At the 1966 Wimbledon Championships 18 out of the 26 finalists wore Fred Perry and 11 out of the 13 winners wore Fred Perry clothing".

...First Choice

of Champions!



Made in New Zealand

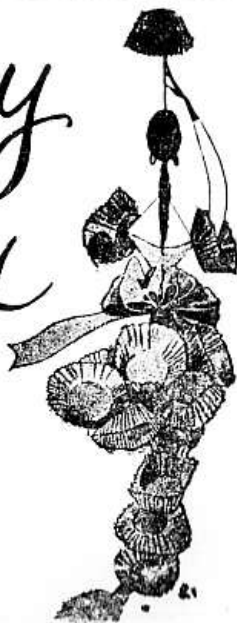
Sole New Zealand Distributors: Bing Harris & Co. Ltd.

*Mary Gray
Originals*

**MARY GRAY
CONFECTIONS**

TWO ADDRESSES:

HEREFORD COURT
116 HEREFORD ST.
680b COLOMBO ST.
CHRISTCHURCH



canterbury table tennis association (inc.)

officers

patron:

GEORGE SHEARMAN, Esq.

president:

MR A. B. McCALLUM

Immediate past president:

MR F. H. G. JOHNSTONE

vice president:

MR C. A. CLARKE

hon. secretary:

MRS E. M. McCALLUM

hon. treasurer:

MR M. A. COX

hon. auditor:

MR D. A. LEE

executive committee:

MESDAMES T. MAY, L. FLINT, N. STACKHOUSE; MESSRS R. G. HART, E. H. D. VINCE, N. B. RADFORD, B. T. EDWARDS, G. ETTRICK, R. DUNSTAN, F. R. SAMSON.

new zealand table tennis association (inc.)

officers

patron:

HIS EXCELLENCY THE GOVERNOR-GENERAL, BRIGADIER SIR BERNARD FERGUSON, G.C.M.G., G.C.V.O., D.S.O., O.B.E.

president:

A. B. McCALLUM, Esq. (Canterbury)

immediate past president:

K. A. FRASER, Esq. (Central Waikato)

vice-presidents:

MESSRS R. W. OWEN (Wanganui), F. J. O'GORMAN (South Canterbury), L. C. ELLIOTT (North Taranaki), V. H. HURREY (Northland), W. O. JAINE (North Shore), K. A. FRASER (Central Waikato), A. R. HARDING (Hutt Valley), I. L. HOUGHTON (Wellington), R. J. RASSIE (Auckland) and MISS M. J. GUTHRIE (Hutt Valley).

life-members:

MESSRS K. B. LONGMORE, V. M. MITCHELL, H. BALLINGER, A. E. B. CHEAL, W. MULLINS, C. O'DRISCOLL and T. S. WILLIAMS.

hon. secretary:

MR K. C. WILKINSON

hon. treasurer:

MR A. R. ZILLWOOD, A.R.A.N.Z.

hon. auditor:

MR K. C. CUBIS, A.R.A.N.Z.

hon. solicitor:

MR K. F. HOGGARD, L.L.B.

executive committee:

MESSRS J. E. STEWART (Chairman), A. R. HARDING (Deputy-Chairman), W. S. R. JOPSON, A. G. DAVIDSON, R. G. LEA, R. J. MENCHI, D. E. BERRY, N. J. TAYLOR, MISS J. E. BROWN.

(Photographs supplied by Christchurch 'Press'.)

For the best selection of Table Tennis Equipment

Bats in both Sponge and Standard by

DUNLOP — SLAZENGERS — WILSON — SPALDING

ANDERSON & HILL LTD.

The Sports Goods Specialists

181 MANCHESTER ST., CHRISTCHURCH PHONE 65-699

**Always ask for "CLIPPER"
when buying CARAVANS**

CLIPPER CARAVANS

25 CLOTHIER STREET CHRISTCHURCH
TELEPHONE 62-133

Caravan Hire Fleet Available

Caravans Built to Any Stage
Frames from £36; Shells from £265;
Completed from £477.

Are you worried about heating — BABY'S ROOM ?

In fact the whole house . . . Motels . . . Offices . . . Bathrooms
. . . Bedrooms.

See the SAFE TO TOUCH — ECONOMICAL — LUXURIOUS

E.F.S. PANEL HEATING at the M.E.D.

MANCHESTER STREET SHOWROOM

Manufactured by EFSCO ELECTRICAL PRODUCTS LTD.
P.O. Box 1229, Christchurch.

a welcome from the president

It is with great pleasure that I again extend a very warm welcome on behalf of the Canterbury Table Tennis Association to an English International Team. The last English Mens' team to tour New Zealand and play in Christchurch comprised Victor Burna and Richard Bergmann, and this was in 1949 — 18 years ago nevertheless, those World Champion players made a great impact on New Zealand Table Tennis.



In 1953 we were privileged to have the world famous Rowe twins—Diane and Rosalind, and they certainly put Womens' Table Tennis on the map in New Zealand. The Rowe twins continued to represent England for many years and are remembered by those who saw them play in New Zealand with their scintillating play, their modesty and unassuming manner and 'smart' uniform appearance.

We are all delighted to welcome Denis Neale and Stuart Gibbs and wish them a very successful and enjoyable tour.

I would like to take this opportunity of welcoming Yvonne and Maree Fogarty of Dunedin, who have made themselves available to play an exhibition singles. Yvonne represented New Zealand at this year's World Championships and holds the New Zealand Junior Championship. Her sister, Maree, is ranked No. 2 Junior under-18 in New Zealand, and this match will enable the public of Christchurch to see these talented sisters in action.

I trust that all who are privileged to see this evening's matches against Canterbury will return to this stadium next Wednesday night to see the International Contest England versus New Zealand.

A. B. McCALLUM,
President,
Canterbury Table Tennis Assn.

sports headquarters for canterbury

CROMB & MERRITT have been supplying QUALITY Equipment to Canterbury sportsmen for over 30 years

CROMB & MERRITT LTD.

"SPECIALISTS IN SPORT"

110 CASHEL STREET

PHONE 60-419

Young's Jewellers Ltd.

Manager: BRUCE BARTLETT

248 OXFORD TERRACE

(opposite Manchester Street Bridge)

CHRISTCHURCH

Specialists in —

ENGAGEMENT RINGS — DRESS RINGS — LADIES' AND MEN'S WRIST WATCHES

Our Repair Service offers you:—

DIAMOND RING repairs and remodelling.
WATCH AND CLOCK REPAIRS — prompt, Guaranteed service.

JEWELLERY repairs and remodelling.

PEARL re-threading.

ENGRAVING — all hand work.

LARGE ORDERS from Clubs catered for.

PHONE 62-411

CALL IN AND TAKE A PEEP

at the latest Books and Magazines on your own particular sport which are constantly arriving from overseas at . . .



SIMPSON & WILLIAMS LTD.

high street christchurch

OUR ENGLISH VISITORS . . .

DENIS NEALE (22), captain of the team, has played 65 times for England and first represented his country at the age of eighteen. His present English ranking is No. 2 and he is ranked 15 on the European ladder.



He has beaten all of Europe's leading players, including the European champion Kjell Johnsson (five times). He has also beaten Scholer, the World's fifth ranked player and No. 1 in Germany.

Other top players he has beaten include Guirgiucan (Europe No. 4), Miko (Europe No. 3) Ammahin (Russian No. 1), and B. Persson (Sweden).

Neale is an all-out attacking player who should be popular with spectators who appreciate fine aggressive table tennis.

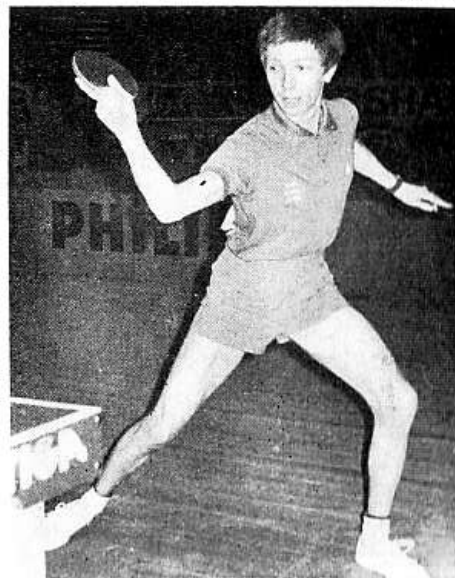
STUART GIBBS is a nineteen year-old player who comes from Forest Gate, London, and has made the transition from junior to senior ranks with remarkable degree of success. He is now ranked No. 5 in England and played in the last World championships.

Gibbs astonished the table tennis world when as a fourteen-year-old he won the Scottish open and junior singles titles in the same year and a short time after this he was selected for the English Junior team.

To date Gibbs has represented the English senior team twelve times and has visited most of the European countries.

His greatest success so far was his victory over the European Champion Kjell Johansson (Sweden).

Gibbs is a fit, fast player, and should delight New Zealand audiences with his attractive attacking play.



You can make **all** your travel bookings

ATLANTIC & PACIFIC TRAVEL

to **anywhere** and get **expert service** at —

131 Cashel Street (Opp. Beaths) Ph. 68-117

AIR — SEA — ROAD — RAIL

also at Auckland - Wellington and Associate Branches throughout the World.

LIGHT IS CHEAP — SIGHT IS PRICELESS

Whether you want ceiling fittings with matching brackets for the new home or pendant fittings for the older home — period or modern design, you will find a marvellous selection at the Department's Showroom.

TABLE LAMPS
TV LAMPS



STANDARD LAMPS
CLIP-ON BED LAMPS

THE LIGHTING SPECIALISTS

TABLE TENNIS PLAYERS —

BUY YOUR BATS AND BALLS AT

LEN KIRK'S SPORTS DEPOT

115A MANCHESTER STREET PHONE 30-193

pen pictures



JOHN ARMSTRONG

John Armstrong first represented Canterbury in 1951 and since that time has been a regular choice for the side generally a No. 1 player.

ARMSTRONG, a defensive player, with uncanny anticipation and neat footwork, has won championship titles too numerous to mention, but his efforts in winning the South Island Mens' Singles Championship on several occasions undoubtedly are his most outstanding successes in tournament play.

ARMSTRONG has played against nearly all visiting teams to this country and although he has not beaten any of these players he has given excellent displays.

ARMSTRONG, over the years, has beaten most of New Zealand's top players including the present New Zealand Mens' Singles Champion B. A. Foster (Otago) and former National Champion M. L. Dunn (Auckland).



LING NAN MING

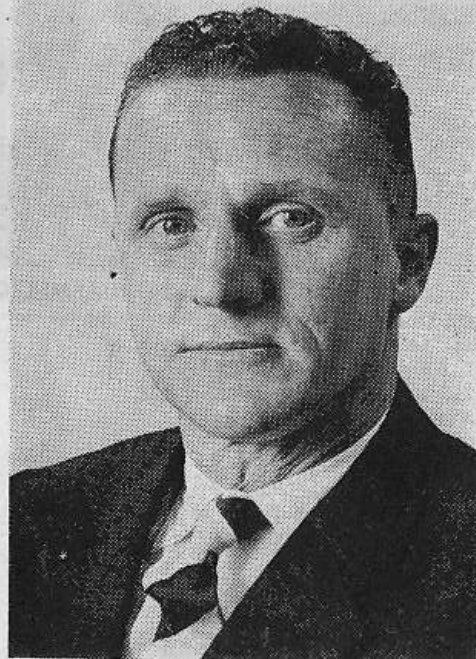
Ling Nan Ming is a nineteen year-old Colombo Plan student who will be making his first appearance for Canterbury in an International match.

LING NAN MING, a pengripper, plays the Asian style of spin serves and powerful loop drives and attacking play.

This player has performed extremely well in inter-club and representative play this season, and he surprised all by extending the New Zealand Mens' Singles Champion, B. A. Foster (Otago) this year.

ATHLETES AGREE —

MILK is a MUST



THE FAMOUS ARTHUR LYDIARD SAYS —

I strongly recommend milk as an essential part of every athlete's diet. Milk possesses outstanding food value without bulk, and includes the stamina-building and energy giving properties that are premier factors in establishing the peak physical condition that is the prerogative of the successful Canterbury athlete.

DRINK

MILK

FOR HEALTH

Christchurch Milk Co. Ltd.

253 CASHEL STREET

PHONE 69-699



V. N. BRIGHTWELL

Veteran of the team, is one of the most experienced players in the country and was a member in 1949 of the New Zealand team which competed for the first time in the Swathling Cup World Championship team events.

On this tour BRIGHTWELL achieved many successes in England and had a good victory over the fourth ranked English player, B. Crouch.

BRIGHTWELL also played against World Champions, Barna and Bergmann, and has played against nearly every player that has visited New Zealand.

BRIGHTWELL is a delightful backhand player with nearly all the shots and although past his best is still superior to many of the up and coming stars.



W. T. SCOTT

A former South Island and Otago representative, is mainly a defensive player who over the years has built up a fine record in top level play.

SCOTT has been New Zealand ranked on many occasions with his fifth ranking in 1960 being his highest placing.

SCOTT has won New Zealand and South Island Junior titles and has achieved many successes at provincial level.

SCOTT'S most outstanding efforts were victories over Australian Singles Champion and test captain G. J. Jennings, and over former New Zealand Singles winner M. L. Dunn (Auckland).

SCOTT has also beaten New Zealand International G. A. J. Frew (Northland) on several occasions.

P R O G R A M M E

Event No. 1 — 7.30 p.m.

K. Ward (Canterbury) v. R. Mitchell (Canterbury)

Winner..... Scores.....

Umpire: Mr T. R. D. FLINT

Event No. 2 — 7.45 p.m.

Miss Y. M. Fogarty (Otago) v. Miss M. Fogarty (Otago)

Winner..... Scores.....

Umpire: Mr M. TONKIN

Event No. 3 — 8.00 p.m.

D. NEALE (England) v. J. ARMSTRONG (Canterbury)

Winner..... Scores.....

Umpire: Mr R. G. HART

Event No. 4 — 8.20 p.m.

S. GIBBS (England) v. LING NAN MING (Canterbury)

Winner..... Scores.....

Umpire: Mr A. B. McCALLUM

Event No. 5 — 8.40 p.m.

D. NEALE & S. GIBBS (England) v. J. ARMSTRONG & LING NAN MING (Canterbury)

Winner..... Scores.....

Umpire: Mr B. T. EDWARDS

Event No. 6 — 9.00 p.m.

D. NEALE (England) & MRS T. MAY (Canterbury) v. S. GIBBS (England) & MISS V. E. BRAUMANN (Canterbury)

Winner..... Scores.....

Umpire: Mr T. R. D. FLINT

Event No. 7 — 9.20 p.m.

D. NEALE (England) v. V. N. BRIGHTWELL (Canterbury)

Winner..... Scores.....

Umpire: Mr A. B. McCALLUM

Event No. 8 — 9.40 p.m.

S. GIBBS (England) v. W. T. SCOTT (Canterbury)

Winner..... Scores.....

Umpire: Mr R. G. HART

Event No. 9 — 10.00 p.m.

D. NEALE & S. GIBBS (England) v. V. N. BRIGHTWELL & W. T. SCOTT (Canterbury)

Winner..... Scores.....

Umpire: Mr B. T. EDWARDS

Event No. 10 — Exhibition Singles

DENIS NEALE (England) v. STUART GIBBS (England)

Winner..... Scores.....

Umpire: Mr A. B. McCALLUM

Referee: Mr C. A. CLARKE.

Are you built for action — the

CHRISTCHURCH INTERNATIONAL RECREATION CENTRE

offer you

SAUNA BATHS - MASSAGE FOR FIRING OF
SAGGING MUSCLES - SEPARATE AMENITIES FOR
MEN AND WOMEN - PLUNGE POOL - SQUASH
COURTS - GOLF DRIVING

TELEPHONE 515-616 - 515-649 for appointment

Address: CHRISTCHURCH AIRPORT

DISABLED SERVICEMEN'S LEAGUE

makers of Championship Table Tennis Tables

- SOUVENIRS
- PAUA INLAID JEWELLERY
- MAORI CARVINGS — DOLLS
- NEW ZEALAND SCARVES

Call at the —

DISABLED SERVICEMEN'S SHOP

146 GLOUCESTER ST.

PHONE 77-537

We Pack and Post your Purchases to any part of New Zealand
and the World.



KEVIN WARD

Kevin Ward (Canterbury) has sky-rocketed to the top of Junior table tennis in New Zealand in a very short time and by his very attractive hard hitting style of play has been a welcome entry in every tournament in which he has competed.

Seventeen-year-old WARD has already led the Canterbury Junior team to a semi-final place in the Schweppes New Zealand Junior teams tournament and he has given sparkling displays for the Canterbury Senior team.

WARD will be Canterbury's main hope for Junior National honours later this season.



ROBERT MITCHELL

Currently ranked in the top six New Zealand Juniors, has been a successful player in tournaments for several years and in 1965 gave a hint of things to come when he won three New Zealand Under-16 titles.

MITCHELL plays the modern style of play of powerful loop drive play and very strong driving.

WINNERS!



OLYMPIC

Balmoral sports shoes give you the grip and support you NEED in any fast moving activity. These superior sports boots offer strong canvas uppers, suction soles, double sponge heels, sponge cushion insoles, and arch support. Also ventilation eyelets and padded tongues for added comfort.

Ladies' Moulded Construction

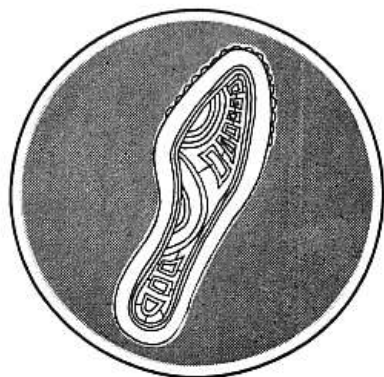
Available in all black, all white, or black with white sole. Sizes 3-8.

Mens' Moulded Construction

Available in black with white non-skid, sole or all white. Sizes 6-11. No half sizes.



SKELLERUP



OLYMPIC SPORTS SHOES

MADE IN N.Z. BY
MARATHON RUBBER
FOOTWEAR LTD.



MISS M. J. FOGARTY

Miss M. J. Fogarty (Otago), ranked No. 2 on the New Zealand Junior ladder, is at 17, two years older than her brilliant sister and although she doesn't possess the same potential, she is still a very fine attacking player who will shortly be established as a senior Otago provincial player.



MISS Y. M. FOGARTY

Miss Y. M. Fogarty (Otago), New Zealand's most outstanding Junior women exponent won five New Zealand Under-age titles last year and by other impressive displays against New Zealand's top players gained a place in the New Zealand team that attended the World Championship at Stockholm last April.

Before attending the World tournament the New Zealand team competed with reasonable success in Scotland where MISS FOGARTY won several championships.

MISS FOGARTY had improved her game whilst on tour and is now a very strong all-round attacking player.

FOR THAT SPECIAL LUNCHEON OR DINNER — the

Hotel Russley

(WOOLRIDGE ROAD)

offers you — superb cuisine, spacious lounges, superlative service
heated swimming pool for use of dinner guests.

PHONE 561-199 for reservations.

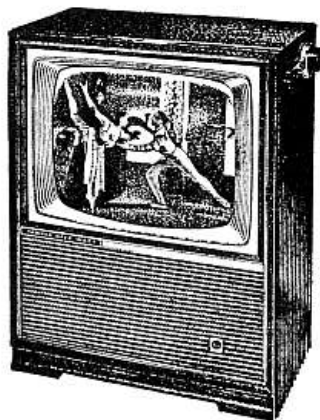
VINCENT PRECISION RADIO LTD.

Radio and Television
SPECIALISTS

"We sell the best and service
the rest"

SALES and SERVICE:

AWA - ADMIRAL - PHILIPS



827 COLOMBO ST. - PHONE 64-310 DAY OR NIGHT

After Sales Service by our own Staff 7 Days a Week

TV Hire Service (with the right to purchase) from 16/6 wkly.

ARTHUR THOMSON

CORNER MCGREGORS AND RURU ROADS,
CHRISTCHURCH, 2

Timber Requirements

Builders' Boxing and Pegs — Path Edging — Fencing Stakes
Seed Trays

4 x 2 and 3 x 2 Framing Timber

PHONE 896-615



MRS T. MAY

Mrs T. May has been a leading Canterbury representative since 1951 and during that time has played a record 146 games for the province.

MRS MAY has also gained South Island honours on six occasions.

In 1964 MRS MAY captained the unbeaten Canterbury team to win the New Zealand Inter-Provincial teams title.

MRS MAY has also a very impressive record in open championship play and has been successful in winning South Island, Canterbury, South Canterbury and Wellington singles titles, as well as numerous doubles events including a New Zealand Womens' title with Miss V. E. Braumann (Canterbury).

MRS MAY has not confined her efforts to the playing side of the sport as she has been a very hard working member of the Canterbury Table Tennis Association for eight years.



MISS V. E. BRAUMANN

Miss V. E. Braumann (Canterbury), formerly of Dunedin till this season, is a most outstanding attacking player who has not gained the successes in singles matches that she has deserved.

She has however been a consistent winner of doubles trophies and with Otago's B. A. Foster and W. T. Scott has won eight South Island mixed doubles events. She has also won South Island, Canterbury and Otago singles tournaments and has been ranked on the New Zealand ladder on several occasions.

YOUR SHELTER TREES

ARE A NECESSITY

For All

FOREST TREES, SHELTER
TREES and HEDGE PLANTS

B R E A K W E L L S

FOREST NURSERIES

679 Main South Road

Phone 497-424

THE REGENT RESTAURANT

NEXT DOOR TO C.P.O.,
CATHEDRAL SQUARE

PHONE 50-567

THE CLEANEST, BRIGHTEST PLACE, WHERE THE
SERVICE ASSURES YOU OF **THE BEST MEALS IN
TOWN**

COME IN AND TRY THEM

English Team's Itinerary

1967 New Zealand Tour

Sunday,	23rd July	Arrive in Auckland from London.
Monday,	24th July	v. Wellington at Wellington.
Tuesday	25th July	v. Nelson at Nelson.
Wednesday	26th July	v. Canterbury at Christchurch.
Thursday,	27th July	v. South Canterbury at Timaru.
Friday,	28th July	Competing in South Island Championships
Saturday,	29th July	at Invercargill.
Monday,	31st July	v. New Zealand, 1st Test at Dunedin.
Wednesday,	2nd August	v. New Zealand, 2nd Test at Christchurch.
Thursday,	3rd August	v. Hutt Valley at Lower Hutt.
Friday,	4th August	v. Wairarapa at Masterton.
Monday,	7th August	v. New Zealand, 3rd Test at Wellington.
Tuesday,	8th August	v. Manawatu at Palmerston North.
Wednesday	9th August	v. South Taranaki at Hawera.
Thursday,	10th August	v. Hamilton at Hamilton.
Friday,	11th August	v. Auckland at Auckland.
Monday,	14th August	v. Northland at Whangarei.
Wednesday,	16th August	v. New Zealand, 4th Test at Auckland.
Thursday,	17th August	v. Bay of Plenty at Tauranga.
Friday,	18th August	v. Rotorua at Rotorua.
Tuesday,	22nd August	v. New Zealand, 5th Test at Wanganui.
Wednesday,	23rd August	Competing in
Thursday,	24th August	New Zealand Championships,
Friday,	25th August	at Wanganui.
Sunday,	27th August	Depart Wellington for United Kingdom.