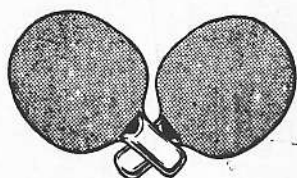


TABLE TENNIS



NEW ZEALAND

v.

JAPAN

(Second Test)

Lower Hutt Town Hall

Thursday, 23rd June, 1960



Official Programme 1/-

SNAX

Regd. Trade Mark



nothing
like
them
anywhere



only
Griffin's
make Snax

THE UNIVERSAL BISCUIT

130

New Zealand Officials

PATRON: His Excellency The Governor General (Lord Cobham)

PRESIDENT: Mr. F. H. G. Johnstone (Canterbury)

VICE-PRESIDENTS:

Messrs A. E. B. Cheal, D. Christie, W. J. Donovan, L. C. Elliott, V. H. Hurrey, A. B. McCullum, F. J. O'Gorman, R. W. Owen, E. W. Tindill, C. O'Driscoll.

LIFE MEMBERS: Messrs K. B. Longmore, V. M. Mitchell.

HONORARY SECRETARY: Mr. K. C. Wilkinson.

HONORARY TREASURER: Mr. H. N. Ballinger, A.R.A.N.Z.

HON. AUDITOR: Mr. R. Lynds, B.Com. HON. SOLICITOR: Mr. J. Meltzer.

EXECUTIVE COMMITTEE:

Messrs W. Mullins (chairman), H. N. Ballinger (deputy chairman), Miss M. J. Guthrie, Messrs L. M. Wilson, J. E. Stewart, H. A. Pyle, T. S. Williams, A. R. Harding, W. S. R. Jopson, J. S. Crossley.

Hutt Valley Officers

PATRON: Mr. J. W. Andrews, O.B.E. PRESIDENT: Mr. V. M. Mitchell

VICE-PATRONS:

The Mayor of Petone
(Mrs. Huggan)

The Mayor of Lower Hutt
(Mr. Dowse)

IMMEDIATE PAST PRESIDENT: Mr. A. G. Davidson.

LIFE MEMBERS: Messrs W. Gleeson, W. Mullins.

VICE-PRESIDENTS:

Messrs J. Holland, R. V. Giles, J. F. Wall, P. Dudley, W. Mullins, W. Prince, W. Giltrap, W. Gleeson, A. R. Harding.

MANAGEMENT COMMITTEE:

Messrs A. R. Harding (chairman), R. J. Campbell (deputy-chairman), Miss B. K. Gardner, Messrs V. Evans, J. Clark, A. Anderson, D. Frater, R. Robinson, G. Dalley and R. Gibson.

HON. SECRETARY: Mr. A. G. White.

HON. TREASURER: Mr. I. Robb.

RECORDING SECRETARY: Mrs. R. Robinson.

HON. AUDITOR: Mr. K. L. Gruschow.

HON. SOLICITOR: Miss M. A. Taylor.

TISDALLS

Have a Large Range of

JAPANESE TABLE TENNIS BATS

Including

"SANDWICH" with Normal and Reserve Pimple,

Also Spare

"SANDWICH" Rubber Facings in Normal and Reverse Pimple

Tisdalls

52 WILLIS STREET, WELLINGTON

Also at

Auckland — Palmerston North — Christchurch

TABLE TENNIS SHIRTS

APPROVED BY THE NEW ZEALAND TABLE TENNIS ASSOCIATION.

WORN BY ALL N.Z. LEADING PLAYERS

COLOURS IN STOCK:

BLACK, GREEN, BLUE, MAROON AND WINE

SIZES: SM, MENS AND OS.

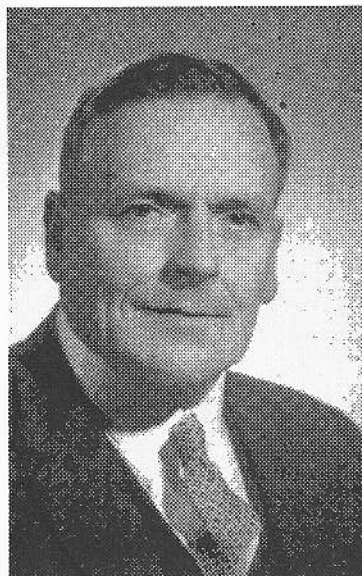
PRICE 21/-

ALSO FRED PERRY SHIRTS AS WORN BY VICTOR BARNA
32/6

Magnet Mercery Ltd.

144 FEATHERSTON STREET, (BASEMENT) WELLINGTON
PHONE 43-648

Mayor's Welcome



"IT is a great occasion for Lower Hutt to be the meeting place for representative table tennis players of Japan and New Zealand.

"This city is fortunate to be in the position of providing the facilities for an international game of table tennis.

"When players reach the standard that we shall witness in this Test match it is indicative that they have worked diligently and are very fit physically.

"I have no doubt that the visit to New Zealand of these eminent players will rouse additional interest in an already popular sport. Good sport supplies the physical exercise necessary for a balanced mind and body.

"We are looking forward to a thrilling evening."

P. DOWSE,

Mayor of Lower Hutt City.



MARATHON

"NET KING"

By SKELLERUP

TENNIS SHOES

WITH THE SPECIAL
"NON-SLIP SOLE"
IDEAL FOR
TABLE TENNIS

MADE IN N.Z.

MEN'S: ALL SIZES & ½ SIZES

Introducing the N.Z. Players

The N.Z. team for tonight's test is Miss Joyce M. Williamson, of Canterbury, Miss Barbara C. Packwood, of Auckland, and Miss Neti Davis, of Northland.

Pen pictures of the players are:--

Miss Williamson.—Born at Christchurch 25 years ago, went to Christchurch West High School. Her interest in table tennis was aroused when a neighbour, Mr. H. Williams invited her to play on his private table. Miss Williamson was then 13. The Blue Star Taxis in Christchurch was her first club, and at 14 years of age she played her first representative game for Canterbury. It was against Otago. Miss Williamson has won all New Zealand titles, senior and junior, except the open mixed doubles. She has even won the Ladies' bracelet.

A private secretary, Miss Williamson was New Zealand singles champion in 1951 and 1954, and she represented New Zealand in the tests against England in 1953 when the Rowe twins, of England, were in New Zealand. In 1957 she went to England and remained there until early this year. Miss Williamson is the holder of the Irish singles and doubles and the Scottish mixed doubles titles. Last year she played for New Zealand in the Marcel Cobillon Cup women's international teams' event at the world championships in Germany. Her N.Z. team mate was Miss Fay Inglis, formerly of



MISS WILLIAMSON

Hutt Valley. For the last two years Miss Williamson has been coaching professionally in England, and since returning to New Zealand has coached something like 400 children. She is returning to England in November to marry Mr. Gwyn Evans, a Welshman and professional Soccer player with the Crystal Palace Club.

Miss Packwood.—Born in Wanganui, was educated at St. Mary's College in Wellington. Miss Packwood got her introduction to table tennis in Christchurch while attending Canterbury University and in her first year of play, 1949 played for Canterbury. She got a New Zealand University Blue for table tennis in 1950, when she won the universities' singles.

A left-hander, Miss Packwood took up a position as a secondary school teacher in Auckland in 1952, and has resided there since. She played for Canterbury in 1949-50-51 and for Auckland in 1952-53-56-57-59. A North Island representative in 1955-56-57-59, Miss Packwood has lost only one singles in inter-island competition. It is as a doubles player that Miss Packwood has had most success. She has won many titles including the New Zealand women's in 1957 and the Auckland women's doubles championship seven times—with three different partners.

In 1957 she toured Australia with the then New Zealand singles champion Miss M. M. Hoar (now married and living in Sydney. Her husband is a new Australian, a Greek J. Catsalis) and with Mrs. J. E. Magorian (selected to play in the first Test). Miss Packwood has been a remarkably consistent player.

Miss N. Davis.—Born in Whangarei, Miss Davis's history reads like a fairy-book story. She received her early play in a tin shed and was coached by her aged Maori grandfather, who had watched a former world champion man play in New Zealand and went home to coach his granddaughter. At 10 years of age Neti was a useful player. At 13 she hit the Press headlines when she played in the New Zealand championships in Lower Hutt. She won nearly all the junior finals and was runner-up in the open mixed doubles with G. A. J. Frew (Northland). At 14 and 15 she played for North Island

(continued on page 16)

First Test ever in Hutt Valley

The Japan v. New Zealand Test tonight is the first table tennis test, men or women, ever played in the Hutt Valley.

The Hutt Valley Table Tennis Association takes this opportunity of welcoming both teams, and on behalf of the public and the association desires to express its best wishes and congratulations to the visitors and to the New Zealand team.

In this country our sporting ambassadors are our Rugby footballers, the All Blacks. Here Rugby is almost a religion. In Japan table tennis is the top sport. It has a playing population of more than 5,000,000. To make the All-Japan table tennis team is a great honour in the land of the rising sun, just as it is to become an All Black in New Zealand.

Our visitors, therefore, realise their country's reputation as tops in the world is at stake, and can accordingly be expected to give the New Zealanders little quarter.

The champion of the world, Miss Matsuzaki is 22. She is a student at Shenshu University where she is taking a commerce course. She hopes to get her degrees and then marry.

The co-holder of the world's doubles championship Miss Yamaizumi is 25 and works for a Tokyo clothing firm. Miss T. Namba (Japan) holds the world title with her.



MISS K. YAMAIZUMI

On their tour of New Zealand the Japanese have won their matches by convincing margins. At the time of writing they had not dropped a set. Japan, of course, holds the No. 1 ranking in the world in teams' play. N.Z. with only a background of Tests against the celebrated English twins Diane and Rosalind Rowe in this country, therefore, have little background to support their chances in tonight's match.

Japan recently had a Hungarian team on tour. Crowds of over 30,000 saw the tests, and millions viewed the tests on television.

In a country with such an immense playing population—it is more than double the entire population of New Zealand—it is not surprising that Japan produces world champions. The manager of Misses Matsuzaki and Yamaizumi (the team captain) makes no secret of the fact that there are about 30 women in Japan in the top group with very little between them.

Table tennis is an all the year round game in Japan, and Misses Matsuzaki and Yamaizumi each have about five hours' practice a day, which includes physical training exercises. Both Misses Matsuzaki and Yamaizumi are pen-grip players, the one time popular grip throughout the world, but now used almost exclusively in the Orient.

(Continued on page 16)



MISS K. MATSUZAKI

Let us Explain

Dear Public, Many of you in our audience tonight will be puzzled. You will wonder why our programme does not set down details of the draw.

It is not our wish to impose on the public, but we had no alternative. The Japan and N.Z. Table Tennis Associations agreed to play this Test under Marcel Corbillon Cup rules, which provide for the draw to be made in front of the public a few minutes before the start of play.

This has never previously been associated with any tour of this Dominion.

The Marcel Corbillon Cup contest is for women's team play in international competition and is held in conjunction with the World Championships. Japan holds the trophy, which is not at stake tonight.

Under the circumstances we could not provide you with a full printed draw, but we have left spaces for you to fill in the names as they are announced.

Australian Visit

The first visit to New Zealand by an Australian men's team will take place next month. G. Jennings and M. Wilcox will arrive at Christchurch on July 17 for a three week's tour of this country concluding with the only test of the tour at Auckland.

The Australians will play Hutt Valley on Thursday, July 28. The venue of the match has yet to be decided.

THANKS

The lights used for both the Hutt Valley v. Japan and N.Z. v. Japan matches were kindly loaned by Messrs Cory, Wright and Salmon Ltd. The H.V.-T.T.A. desires to express its thanks to the firm for its assistance.

The Hutt Valley Association would also like to thank all its advertisers and commend readers to support them.

R. S. Muirhead & Son

TYRES OF QUALITY ALL MAKES AND TYPES
 GUARANTEED RECAPS
 PETROL AND LUBRICATION

Benefit from our experience in tyre servicing.



CALL—

R. S. Muirhead & Son

PHONE 61-408 508 HIGH STREET, LOWER HUTT.

Japan v. New Zealand

THE TEAMS

JAPAN

- No. 1. Miss K. Matsuzaki
- No. 2. Miss K. Yamaizumi

Manager: Mr. H. Shimizu

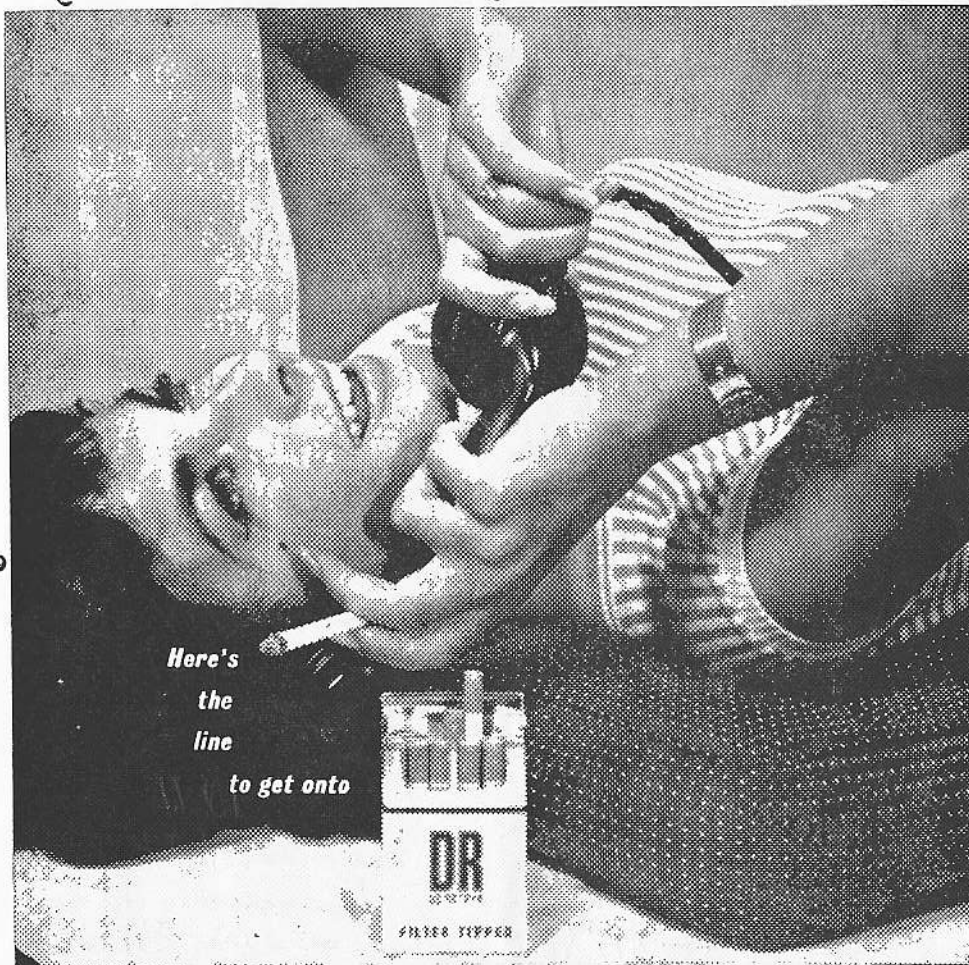
NEW ZEALAND

- No. 1. Miss J. M. Williamson
- No. 2. Miss B. C. Packwood
- No. 3. Miss N. Davis

Manager: Mrs. V. E. Muirhead

Scores

Event No.	1st Set	2nd Set	3rd Set
Event No. 1 <i>Packwood</i> v <i>YAMAIZUMI</i> Umpire: Mr. K. L. Pointon.	5	7	
Event No. 2 <i>WILLIAMSON</i> v <i>MATSUZAKI</i> Umpire: Miss B. K. Gardner.	12	8	
Event No. 3 Doubles game <i>WILLIAMSON & DAVIS</i> v <i>MATSUZAKI & YAMAIZUMI</i> Umpire: Mr. R. G. Lea.	7	7	
INTERVAL			
Event No. 4 <i>PACKWOOD</i> v <i>MATSUZAKI</i> Umpire: Mr. R. J. Campbell.	10	11	
Event No. 5 <i>WILLIAMSON</i> v <i>YAMAIZUMI</i> Umpire: Mr. K. L. Pointon.	9	12	
EXHIBITION			
Event No. 6 Miss Matsuzaki v. Miss Yamaizumi Umpire: Mr. J. E. Stewart.	18	21	
Event No. 7 Presentation to Players MATCH ANNOUNCER: Mr. T. A. Walsh. REFEREE: Mr. A. Percy.			



Get into the picture with DR. They're the only king size filter at the regular price of 2/7, and combine their up front tobacco with one of the world's best filters. You pocket the difference and can prove with a packet . . .

DR filters best

A Godfrey Phillips Product

Remember Them?

TANAKA AND OGIMURA WERE BRILLIANT

Fresh in the memories of many New Zealanders will be the tour in 1957 of the Japanese men T. Tanaka and I. Ogimura, then the two top men in world table tennis.

The play of Tanaka and Ogimura in their exhibition matches was fantastic. No other word could describe their play.

Tanaka and Ogimura were the first Japanese players to come to New Zealand. Misses K. Matsuzaki and K. Yamaizumi comprise the second team but on each occasion the manager has been the same man, Mr. H. Shimizu, a genial middle-aged man who is a lecturer at Chuo University. He provided a light touch in several matches on the 1957 tour when he appeared in match-play. In the Hutt Valley game he played the chairman of the Hutt Valley Association, Mr. A. R. Harding.

Japanese players have met with amazing success since their first entry into the world championships in 1951. In nine years of campaigning they have contested 35 titles and won 13 of them. For virtually a new nation in table tennis Japan has met with astounding success, but in Japan table tennis is one of several sports students at secondary schools have to choose from as compulsory subjects.

To gain a place in the All-Japan table tennis team is the equivalent of gaining a place in New Zealand's All Blacks.

Squads of Japanese players are selected annually to attend special training courses. They are the players in the top group or on the verge of it.

In the training camps the players battle it out for places in the Japan team. At the camps, the players are put through gruelling tests to sound out their physical fitness on the table. Physical training exercises are part of their training.

When here Tanaka and Ogimura stated that a Japanese player who could not hit the ball across the net 1000 times at pace without making a mistake did not measure up to requirements.

Those who saw Tanaka and Ogimura play in New Zealand and recalling those furious forehand exchanges in which the ball travelled at breath-taking speed as drives were swapped for minutes without making a mistake will appreciate the thoroughness of the Japanese.

Tanaka and Ogimura thrilled New Zealand audiences. They broke all previous attendance records and table tennis in this country benefited by some £2,000.

The cost of bringing Misses Matsuzaki and Yamaizumi to N.Z. is almost £2,000, which is passed on to associations in the form of guarantees. Hutt Valley had to guarantee £200 for its two matches. Add to that figure hall rental, which is quite substantial, entertainment, advertising and other costs and something like £400 has to be taken to make ends meet. The New Zealand Association takes 25 per cent of any profit.

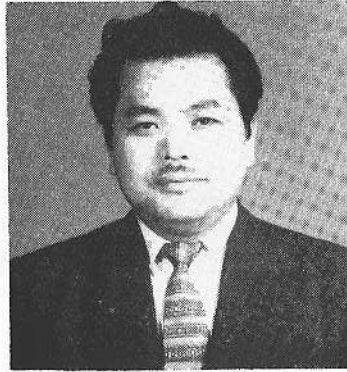
Tours, however, are the best medium of advertising the sport. In this respect the New Zealand Association is to be congratulated for it rarely accepts anything but the top talent for New Zealand viewers.

It is perhaps significant when it realised that eight men who have won the world championship have played in New Zealand. Miss Matsuzaki is, however, the first woman world singles champion to play here. The only other visit to this country by a women's team was in 1953 when the celebrated England players the Rowe twins, Diane and Rosalind created tremendous interest. They were holders of the world doubles championship, but the singles title eluded them both.

The profits from their tour were the best until Tanaka and Ogimura came. Who could forget Tanaka and Ogimura. We would like to pay tribute to their wonderful play. Let's hope that tonight Misses Matsuzaki and Yamaizumi will thrill us as they did, bearing in mind, of course, that Tanaka and Ogimura were men, and our current visitors are of the fair sex, and accordingly make allowance.

TOURIST'S MANAGER

Mr. H. Shimizu, who is managing Misses K. Matsuzaki and K. Yamaizumi on the current tour of New Zealand is paying his second visit to our country. He managed T. Tanaka and I. Ogimura on their 1957 visit here, and as a Director of the Japan Table Tennis Association we extend to him and Misses Matsuzaki and Yamaizumi a very cordial welcome.



MR. H. SHIMIZU.

The sporting public of New Zealand loves to see world champions in action, and we, along with all other fellow-countrymen, are grateful to the Japan Table Tennis Association for permitting Misses Matsuzaki and Yamaizumi to make this tour. We feel sure that Mr. Shimizu, as a leading figure in the administration of the sport in Japan, must have fully supported New Zealand's invitation to the Japanese women to come here this year. We are equally confident that Mr. Shimizu's experiences in New Zealand in 1957 contributed largely to the Japan Association accepting the New Zealand invitation on this occasion.

The Hutt Valley Table Tennis Association hopes that the present tour is

as pleasant for Misses Matsuzaki and Yamaizumi and Mr. Shimizu as was the 1957 tour for the Japanese men.

In 1957 Mr. Shimizu delighted audiences with his near burlesque play. He was a popular figure and at all times was thorough in the interests of his country and his players.

We again welcome Mr. Shimizu to the Hutt Valley.

ALLAN NEWBOLD & CO.

LTD.



FOR ALL FAMOUS HOME APPLIANCES AND TRADE NAMES
Kelvinator, Whiteway, Bendix, Goblin, Murphy, Astor, Phillips.



SHOPS IN
Lambton Quay, Wellington, Lower Hutt, Masterton and Otaki.

FREE DELIVERY:

PETONE — LOWRY BAY — PT. HOWARD — DAYS BAY

McLean's

SELF SERVICE GROCERY STORE, PETONE.

OFFERS ONLY THE BEST

SHOP WHERE THE SERVICE AND GOODS ARE
SATISFACTORY

McLean's

THE NAME OF RELIABILITY

CLIVE WILLIAMS, Prop.

RING 63-607

Bob Scott Petone

ALL MEN'S REQUIREMENTS
HIRE DINNER SUIT SERVICE



CALL AT—

Bob Scott's

FOR PROMPT, EFFICIENT SERVICE.

