

# RULES AND REGULATIONS

## 1. RULES

1.1 ITTF Laws of Table Tennis and ITTF Regulations for International Competitions (latest edition) will be applied, although the Rules and Regulations for the World Veterans Championships shall take priority.

## 2. ELIGIBILITY

2.1 All individuals who are older than 40 years of age or who will be 40 years of age in the year of the WVC are eligible to participate.

2.2 Upon the request of the Organisers, the participants shall present their passport/ID Cards as proof of age.

## 3. CATEGORIES AND EVENTS

3.1 Categories:

40 – 49 years  
50 – 59 years  
60 – 64 years  
65 – 69 years  
70 – 74 years  
75 – 79 years  
80 – 84 years  
85 years and over.

3.2 Each category will have the following events:  
Men and Women Singles / Men and Women Doubles

3.3 In the event of less than four players entering any one event, the WVC Committee has the right to either cancel the said event, or introduce a reasonable alternative for all concerned.

3.4 Every entered player is allowed to participate in one singles and one doubles event. A player must participate in her/his own age category, except in doubles. If players of a pair do not belong to the same age group, then they shall be placed in the category of the younger player.

3.5 If the doubles partner (according to the draw) is not present a new partner will be given by the Organiser if possible.

3.6 A doubles pair shall not be altered if both players are present and fit to play. However, injury, illness or the absence of one player may be accepted as justification for an alteration to take place, but only before the announced “deadline”.

3.7 All entries in singles and doubles will be published on the organisers’ website immediately after the deadline. Players are responsible for

checking their respective entries or to ask for a confirmation from the organiser within the next 4 weeks. No alterations and new entries will be accepted after deadline.

## 4. DOUBLES PROCEDURE FOR PARTICIPANTS

- A player entering a doubles event without a doubles partner (partner wanted) must accept any doubles partner assigned to him by the Organisers.
- Doubles pairs which are confirmed from both players or which are combined by the Organisers may not be altered by a player (such a pairing may only be changed if one of its players has cancelled her/his participation in the competition).
- A list of pairs entered in the doubles event – confirmed by both players – will be published on the internet as soon as possible.
- A second list of players who have entered in the doubles event under the following:
  - Players not having a partner (partner wanted)
  - Players not having confirmed this pairing (half open doubles).

will be published on the internet (not later than 4 weeks after the deadline of the extended Entry Date). The players on this second list are allowed to request (or arrange) a doubles partner themselves, up until the defined “deadline” 3 weeks before the start of the accreditation at the venue.

Both players of a newly formed doubles pair shall confirm this pair immediately.

## 5. ORGANISATION

5.1 The World Veterans Championships in Table Tennis is an official competition supervised by the Swaythling Club International and approved by the ITTF.

5.2. The Organiser of the World Veterans Championships (WVC) is Table Tennis New Zealand, via it's wholly owned event company, WVC2014 Ltd.

5.3 The Championships will be held from May 12th to May 17th, 2014 in Auckland, New Zealand. On the opening day, the competition will begin at 09.00 hrs local time.

## 6. SYSTEM OF PLAY

6.1 Each category of singles and doubles will be played best of five games (until 3 games are won), and as follows:

6.1.1 The Qualifying Competition will be played in groups of four (all play all). The first and second placed will play in the World Championships Competition, the third and fourth placed will play in the Consolation Competition – only if they so wish and only if they mark this on the score sheet immediately after play in their group has finished.

6.1.2 In the event that there are two or more players in a group from the same National Association, it is essential that these matches be the first to be played.

6.1.3 The Consolation Competition will be played according to the knock-out system.

6.1.4 The World Championships Competition will be played according to the knock-out system.

6.2 The ranking order in a group shall be decided as follows:-

6.2.1 Two match points shall be awarded for a win, 1 for a loss in a played match, and 0 for a loss in an un-played match.

6.2.2 The ranking order shall be determined primarily by the number of match points gained.

6.2.3 If two or more members of the group have gained the same number of match points, their relative positions shall be determined only by the results of the matches between them, by considering successively the numbers of match points, as far as is necessary to resolve the order.

6.2.4 If at any step in the calculations the position of one or more members of the group have been determined while the others are still equal, the results of the matches in which those members took part shall be excluded from any further calculations needed to resolve the equalities in accordance with the above procedure.

6.2.5 If it is not possible to resolve equalities by means of the above procedure the relative positions shall be decided by lots made by the referee.

6.2.6 It is strongly recommended that a free day be considered, if at all possible, to allow for social activities and sightseeing.





## 7. THE DRAW

7.1 The draw for the Qualifying Competition will take place approx 14 days before the beginning of the World Veteran Championships

7.2 The draw for the World Championship Competitions and Consolation Competitions will take place immediately after completion of each age category's qualification matches in the Qualifying Competition.

7.3 For any changes or additions to the draw, the Organiser is required to obtain the approval of the Jury.

## 8. MATCH OFFICIALS

8.1 The Organiser will provide local and foreign umpires for the World Championships Competition and the final stages of the Consolation Competition.

8.2 In the group play, members of the groups not playing shall make themselves available as umpires.

8.3 In the Consolation Competition, the loser of the match shall be umpire in the next match at the table where he or she played.

## 9. EQUIPMENT

9.1 ITTF approved tables, surrounds, nets and balls will be used.

9.2 One side of a racket must be bright red and the other black.

9.3 Racket covering must be ITTF approved.

## 10. PLAYING CONDITIONS

10.1 The size of the court will be a minimum 10 m x 5 m.

10.2 Access to a gluing room must be provided.

## 11. PLAYERS OBLIGATIONS

11.1 Players are responsible for their physical and mental fitness to compete in the Championships.

It is recommended that a routine check-up ahead of the W.V.C should be carried out by a doctor.

Any necessary health and accident insurance policies must be taken out by the players themselves.

11.2 Players accept the ITTF Anti-Doping Rules (see chapter 5 of the ITTF Handbook) as a condition of participation.

It is recommended that in the event of a player being prescribed specific medication in connection with his general health from his Doctor, the said player must obtain the necessary written confirmation from his Doctor.

In the event of a violation of these rules, the WVC Committee will decide about any sanctions.

11.3 Players may use only approved and authorised equipment according to the valid list provided on the ITTF Website.

11.4 Players must accept the ITTF Gluing Regulations (see chapter 3.2.4 of the ITTF Handbook) as a condition of participation.

In the event of a violation of these regulations, the Referee will decide about any sanctions.

11.5 Each player is obliged to compete at the time and table set by the "Competition . Schedule".

The player is responsible for keeping her/himself informed when and where to play. Any player who fails to appear at the scheduled time will automatically lose the match, after a 5 minute waiting period.

11.6 All players must sign the result of the score sheet after the match, before leaving the table.

11.7 During the competition players will be required to carry with them their entry numbers – said entry numbers to be attached to their sports shirt on their back whilst playing.

11.8 The organisers accept that no restrictions should be made with regard to drinking "water" in the duration of a match. However, drinking water will only be specifically allowed at the same time as the "towelling down regulation".

11.9 No advertisement for alcoholic drinks and tobacco shall be worn by the players in the playing halls.

11.10 Only the members of the respective group/ individual match played at that table and one coach per player/pair (two coaches for doubles containing two associations) are allowed to enter the playing area. All other players/spectators not playing in the respective group/individual match have to be outside of the playing area (stands/spectators area).

## 12. REST BETWEEN MATCHES

12.1 Each player is entitled to a 5 minute rest between two matches, or at the Table Manager's discretion.

## 13. APPEALS

13.1 Appeals will be dealt with by a three-member Jury, composed of a WVC Committee Member, a referee and a representative of the Organising Committee. This must be publicly displayed in the playing hall (in the same area where the results are published) on the official Tournament Board.

Protests can be lodged against the decision of the referee only, and they have to be submitted in writing to the Organising Committee immediately after the completion of the match

No member of the Jury can take part in the tournament. .

## 14. CEREMONIES/PRIZES

14.1 To be decided upon together with the Organisers.

14.2 The top four players and pairs in each category of the World Championships Competition will be presented with medals. The winners will also be presented with a special trophy from the Swaythling Club International.

14.3 Winners and runners-up of the Consolation Competition will receive a souvenir, which will be handed over at the table immediately after the final match.

14.4 All participants will be awarded a Championship Diploma.



# PAST CHAMPIONS

## Gothenberg 1982 450 Players 23 countries

### Men's singles

40 Hubner GER  
50 Hedin SWE  
60 Etheridge ENG  
70 Nakamura JPN

### Women's singles

40 Ito JPN  
50 Miyagawa JPN  
60 Bihl GER  
70 Lauder ENG

### Men's doubles

40 Hubner / Gomolla GER  
50 Kindstedt / Osterholm SWE  
60 Berggren / Neidenmark SWE  
70 Bellak / Juhl USA/DEN

### Womens doubles

40 Ito / Omori JPN  
50 Nakatsuka / Tsuboko JPN  
60 Goransson / Narting SWE

## Helsinki 1984 650 Player 28 countries

### Men's singles

40 Hubner GER  
50 Kleewein AUT  
60 Etheridge ENG  
70 Kyntoaho FIN  
80 Ebina JPN

### Women's singles

40 Ito JPN  
50 Kucharska POL  
60 Tasaka JPN  
70 Fernberg SWE

### Men's Doubles

40 Bergmann / Martin GER  
50 Sheader / Schofield ENG  
60 Blomquist / Saverstrom SWE  
70 Pettersson / Westblad SWE

### Women's doubles

40 Ito / Omori JPN  
50 Jaquet / Sasaki SUI / JPN  
60 Hornyak / Tasaka USA/JPN  
70 Fernberg / Sundquist SWE

## Rimini 1986 1074 Players 37 countries

### Men's singles

40 Vecko SVN  
50 Gomolla GER  
60 Tsujita JPN  
70 Blomkvist SWE  
80 Hieronymus SWE

### Women's singles

40 Alexandru ROU

50 Ito JPN  
60 Tasaka JPN  
70 Uchida JPN

### Men's doubles

40 Nisavac / Vecko SVN  
50 Larsson / Mellstrom SWE  
60 Forsberg / Lantz SWE  
70 Blomkvist / Larsson SWE

### Women's doubles

40 Alexandru / Tegner ROU/SWE  
50 Ito / Omori JPN  
60 Nakatsuka / Takada JPN  
70 Frauenkrohn / Sammer GER

## Zagreb 1988 1628 Players 34 countries

### Men's Singles

40 Surbek HRV  
50 Hold AUT  
60 Heremans BEL  
70 Blomkvist SWE  
80 Lundblad SWE

### Women's Singles

40 Radberg SWE  
50 Miyamjima JPN  
60 Fitzgerald AUS  
70 Uchida JPN  
80 Engvall SWE

### Men's Doubles

40 Cordasz / Surbek HRV  
50 Persson / Skultety SWE  
60 Heremans / Nieuwejaers BEL  
70 Hada / Melzer GER  
80 Kjellander / Lundblad SWE

### Women's Doubles

40 Borg / Radberg SWE  
50 Ito / Omori JPN  
60 Nakatsuka / Takada JPN  
70 Mizoguchi / Yamada JPN

## Baltimore 1990 1100 Player 58 countries

### Men's Singles

40 Liang Geliang CHN  
50 Hold AUT  
60 Heremans BEL  
70 Hendry USA  
80 Koon USA

### Women's Singles

40 Shao USA  
50 Ito JPN  
60 Fitzgerald AUS  
70 Carrington ENG  
80 Lauder ENG

### Men's Doubles

40 Liang Geliang / Kunz CHN/GER  
50 Hold / Kleewein AUT

60 Sheader / Schofield ENG  
70 Croneryd / Nilsson SWE  
80 Cheal / Ulpiano NZL/USA

### Women's Doubles

40 Kunstein / Trupkovic GER  
50 Ito/Omori JPN  
60 Feadle / Fitzgerald ENG/AUS  
70 Delay / Bebattet FRN

## Dublin 1992 1226 Players 40 countries

### Men's Singles

40 Liang Geliang CHN  
50 Hold AUS  
60 Sheader ENG  
70 D'Arcy ENG  
80 Jenkins ENG

### Women's Singles

40 Radberg SWE  
50 Zemke GER  
60 Zehne GER  
70 Nakamura JPN  
80 De Low AUS

### Men's Doubles

40 Liang Geliang / Lammers CHI/GER  
50 Hold / Kleewein AUT  
60 Sheader / Schofield ENG  
70 Hull / Rocker USA  
80 Bellak / Jenkins USA/ENG

### Women's doubles

40 Borg / Radberg SWE  
50 Niemeyer / Zemke GER  
60 Willke / Zehne GER  
70 Bihl / Jahn GER  
80 Dahlberg / Lauder SWE/ENG

## Melbourne 1994 1771 Players 49 Countries

### Men's Singles

40 Liang Geliang CHN  
50 Yang CHN  
60 Heremans BEL  
70 Mai AUS  
80 Larsson SWE

### Women's Singles

40 Trapp GER  
50 Fedorova RUS  
60 Santifaller ITA  
70 Tasaka JPN  
80 Uchida JPN

### Men's doubles

50 Liang Geliang / Neubauer CHN/SUI  
50 Naguibekov / Rauch RUS/GER  
60 Sheader / Schofield ENG  
70 Chen / Lo TPE  
80 Engkvist / Larsson SWE

### Women's Doubles

40 Kneip-Stumpe / Trapp GER  
50 Baumann / Rauscher GER  
60 Santifaller / Wetterstrom ITA/SWE  
70 Nakamura / Tasaka JPN  
80 Chiba / Uchida JPN

## Lillehammer 1996 1960 Players 48 Countries

### Men's Singles

40 Li Yuxiang GER  
50 Neubauer SUI  
60 Karlsson SWE  
70 Osterholm SWE  
80 Natterer GER

### Women's Singles

40 Antonian ARM  
50 Fedorova RUS  
60 Ito JPN  
70 Tasaka JPN  
80 Uchida JPN

### Men's doubles

40 Li Yuxiang / Pedersen GER/DEN  
50 Amelin / Surbeck RUS/HRV  
60 Neusser / Tsui GER/HKG  
70 Forsberg / Osterholm SWE  
80 Blomkvist / Nilsson E. SWE

### Women's Doubles

40 Lindstrom / Radberg SWE  
50 Hamel / Strauss GER  
60 Ito / Omori JPN  
70 Matsuda / Tasaka JPN  
80 Goransson / Narting SWE

## Manchester 1998 1364 Players 53 Countries

### Men's Singles

40 Li Yuxiang GER  
50 Lieck GER  
60 Magnusson SWE  
70 Etheridge ENG  
80 Saverstrom SWE

### Women's Singles

40 Farina RUS  
50 Mochida JPN  
60 Nagase JPN  
70 Wetterstrom SWE  
80 Uchida JPN

### Men's Doubles

40 Li / Stellwag GER  
50 Amelin / Neubauer RUS/SUI  
60 Hirt / Lippelt GER  
70 Davies / Hartshorn ENG  
80 Saverstrom / Blomkvist SWE

### Women's Doubles

40 Antonian / Trapp ARM / GER  
50 Fukui / Mochida JPN  
60 Lantermann / Zehne GER  
70 Jones / Wetterstrom ENG/SWE  
80 Brunsjo Astedt / Goransson SWE





**Vancouver 2000**  
**1860 Players 57 Countries**

**Men's Singles**

40 Cecava CZE  
 50 Liang Geliang GER  
 60 Lau USA  
 70 Psterholme SWE  
 80 Sawerstrom SWE

**Women's Singles**

40 Takakiwa JPN  
 50 Mochida JPN  
 60 Ikeda JPN  
 70 Yamanaka JPN  
 80 Gray WAL

**Men's Doubles**

40 Murakami / Tokai JPN  
 50 Lieck / Ezz GER/SUI  
 60 Hirt / Lippelt GER  
 70 Fleiner / Illberg GER  
 80 Sawerstrom / Blomkvist SWE

**Women's Doubles**

40 Pederson / Ramberg DEN  
 50 Fukui / Mochida JPN  
 60 Bird / Pilliere AUS/FRA  
 70 Butcher / Wetterstrom ENG/SWE  
 80 Delay / Rebattet FRA

**Lucerne 2002**  
**2674 Players 63 Countries**

**Men's Singles**

40 Cecava CZE  
 50 Liang Geliang GER  
 60 Langer GER  
 65 Ulmer GER  
 70 Karlsson SWE  
 75 Ruzha CZE  
 80 D'Arcy ENG

**Women's Singles**

40 Urban HUN  
 50 Mochida JPN  
 60 Ikeda JPN  
 65 Ito JPN  
 70 Tosa JPN  
 75 Fletcher ENG  
 80 Crevecoeur BEL

**Men's Doubles**

40 Leshev / Manturov RUS  
 50 Surbek / Amelin HRV/RUS  
 60 Werkmann / Langehegermann GER/LUX  
 65 Brook / Buist ENG  
 70 Karlsson / Kindstedt SWE  
 75 Ruzha / Forsberg CZE/SWE  
 80 Etheridge / Ramel ENG/SUI

**Women's Doubles**

40 Takahashi / Takakiwa JPN  
 50 Fukui / Mochida JPN  
 60 Uchida / Yoshimura JPN  
 65 Bird / Pilliere AUS/FRA  
 70 Willke / Fehne GER  
 75 Fynn / Devicenska CAN/LAT  
 80 Shigemi / Yoshitake JPN

**Yokohama 2004**  
**2380 Players 47 Countries**

**Men's Singles**

40 Applegren SWE  
 50 Leshev RUS  
 60 Neubauer SUI  
 65 Langehegermann LUX  
 70 Tsui HKG

75 Lu TPE  
 80 Leving IRL  
 85 Chen TPE

**Women's Singles**

40 Otsu JPN  
 50 Gao CHN  
 60 Fedorova RUS  
 65 Miyajima JPN  
 70 Tosa JPN  
 75 Asami JPN  
 80 Tasaka JPN  
 85 Uchida JPN

**Men's Doubles**

50 Chih / Chih TPE  
 50 Surbek / Amelin HRV/ RUS  
 60 Diao / Neubauer SMR/SUI  
 65 Borg / Magnusson SWE  
 70 Merimaa / Smith FIN/USA  
 75 Chuang / Lu TPE  
 80 D'Arcy / Levinge ENG/IRL  
 85 Hisadomi / Kikuchi JPN

**Women's Doubles**

40 Otsu / Sakamoto JPN  
 50 Gao / Wu CHN  
 60 Kodama / Ono JPN  
 70 Ito / Tosa JPN  
 75 Muramatsu / Yamanaka JPN  
 80 Matsuda / Tasaka JPN  
 85 Ijichi / Uchida JPN

**Bremen 2006**  
**2,834 Players 40 Countries**

**Men's singles**

40 Alan Cooke ENG  
 50 Li USA  
 60 Reuland GER  
 65 Bilic GER  
 70 Stolzenburg GER  
 75 Gross GER  
 80 Smid CZE  
 85 D'Arcy ENG

**Women's Singles**

40 Batinic HRV  
 50 Batinic Trupkovic GER  
 60 Fukushima JPN  
 65 Ikeda JPN  
 70 Nagase JPN  
 75 Langen GER  
 80 Fynn CAN  
 85 Uchida JPN

**Men's Doubles**

40 Kalinic / Miller SCG/SUI  
 50 Lindmae / Segal EST/UKR  
 60 Surbek / Amelin HRV/RUS  
 65 Langer / Lippelt GER  
 70 Kruger / Luber GER  
 75 Breumair / Rau GER  
 80 Forsberg / Osterholm SWE  
 85 Berthold / Scheuer GER

**Women's Doubles**

40 Batinic / Farina HRV/RUS  
 50 Antonyan / Trapp ARM/GER  
 60 Fukushima / Mizuguchi JPN  
 65 Hiroi / Shimizu JPN  
 70 Harada / Nagase JPN  
 75 Kujirai / Tanigawa JPN  
 80 Fletcher / Bihl ENG/GER  
 85 Goransson / Gray SWE/WAL

**Rio de Janeiro 2008**  
**1,316 Players 53 Countries**

**Men's Singles**

40 Ding Yi AUT  
 50 Cecava CZE  
 60 Kunz GER  
 65 Schmidt GER  
 70 Lippelt GER  
 75 Lockwood ENG  
 80 Ruzha CZE  
 85 Joing FRA

**Women's Singles**

40 Tikhomirova RUS  
 50 Takakiwa JPN  
 60 Takahashi JPN  
 70 Toda JPN  
 75 Willke GER  
 80 Tanigawa JPN  
 85 Bihl GER

**Men's Doubles**

40 Fejer-Konnert/ Ciociu GER/LUX  
 50 Kalinic/ Yuxiang SER/ USA  
 60 Pedersen/ Ramberg DEN/ DEN  
 65 Neubauer/ Schmidt SUI/ GER  
 70 Mach/ Steinkamper SUI/ GER  
 75 Economellis/ Morris GRE/ RSA  
 80 Englmaier/ Junker GER/ GER  
 85 Levigne/ D'Arcy RL/ ENG

**Women's Doubles**

40 Bazzi/ Yenenko SUI/UKR  
 50 Ramberg/ Kruger-Trupkovic DEN/ GER  
 60 Tomiyama/ Fukushima JPN/ JPN  
 65 Shimizu/ Hiroi JPN/ JPN  
 70 Nagase/ Harada JPN/ JPN  
 75 Willke/ Zehne GER/ GER  
 80 Asami/ Takamura JPN/ JPN

**HohHot 2010**  
**2,076 players 51 Countries**

**Men's Singles**

40 Bentsen DEN  
 50 Ding Yi AUT  
 60 Yin CHN  
 65 Lieck GER  
 70 Langer GER  
 75 Ling HKG  
 80 Bates AUS  
 85 Shih-Hsiung TPE

**Women's Singles**

40 Tian-Zorner GER  
 50 Takakiwa JPN  
 60 Shi Ping Lin CHN  
 65 Nagasawa JPN  
 70 Ikeda JPN  
 75 Harada JPN  
 80 Butcher ENG  
 85 Modlich USA

**Men's Doubles**

40 Li Zheng / Liang Hong An CHN  
 50 Lu Qi Wei / Shen Bin CHN  
 60 Liang Ge Liang / Lieck CHN/GER  
 70 Thornsson / Olofsson SWE  
 75 Lockwood / Wood ENG  
 80 Donlon / Rossler ENG/GER  
 85 Forsberg / Darcy SWE/ENG

**Women's doubles**

40 Wu Wei / Zhao Wei Ying CHN  
 50 Pan Xiao Mei / Zhang Ya Nan CHN  
 60 Iseki / Yajima JPN  
 65 Baron / Engel GER  
 70 Ikeda / Otaki JPN  
 75 Blasberg / Butcher GER/ENG  
 80 Kurjiral / Tanigawa JPN  
 85 Bihl / Herrmann GER

**Stockholm 2012**  
**3,316 Players 45 countries**

**Men's Singles**

40 Saive BEL  
 50 Appelgren SWE  
 60 Jorn Pedersen DEN  
 65 Wang CHN  
 70 Lippelt GER  
 75 Rakosnik CZE  
 80 Bax ENG  
 85 Osterholm SWE

**Men's Doubles**

40 Illarionov / Roldugin RUS  
 50 Kahara / Tokai JPN  
 60 Fraczyk / Sorger AUT  
 65 Wang / Diao CHN  
 70 Lemke / Lippelt GER  
 75 Kruger / Luber GER  
 80 Fleiner / Grob GER  
 85 Forsberg / Osterholm SWE

**Women's Singles**

40 Arisi ITA  
 50 Oshima JPN  
 60 Kneip GER  
 65 Okura JPN  
 70 Ikeda JPN  
 75 Bird ENG  
 80 Tosa JPN  
 85 Krejcova CZE

**Women's Doubles**

40 Bolenius / Wiktorsson SWE  
 50 Nakamura / Ono JPN  
 60 Ioki / Tagomori JPN  
 65 Berg / Rauscher GER  
 70 Hiroi / Mishima JPN  
 75 Harada / Nagase JPN  
 80 Willke / Zehne GER  
 85 van Gerlder / Krejcova BEL/CZE





# PING PONG HITS THE BIG SCREEN

Most veteran players will be aware of the feature-length documentary "Ping Pong" and many will have seen it.

It appeared in New Zealand in mid 2013 and was screened in 30 theatres with a viewing audience of around 5,000. The documentary follows a small group of veteran table tennis players as they prepare for and compete in the 2010 World Veteran Championships in China. More an intimate glimpse into the hearts and minds of old people than a table tennis documentary, it struck a chord with audiences well outside the table tennis fraternity and was a hit movie throughout the world.

It received good reviews in New Zealand, with critics praising the warm and candid portraits of the eight featured players, all aged between 80 and 100. Among table tennis stalwarts the reaction was somewhat mixed, with some saying there was not enough actual table tennis. Nonetheless the general consensus was that the movie was enjoyable and worth seeing.

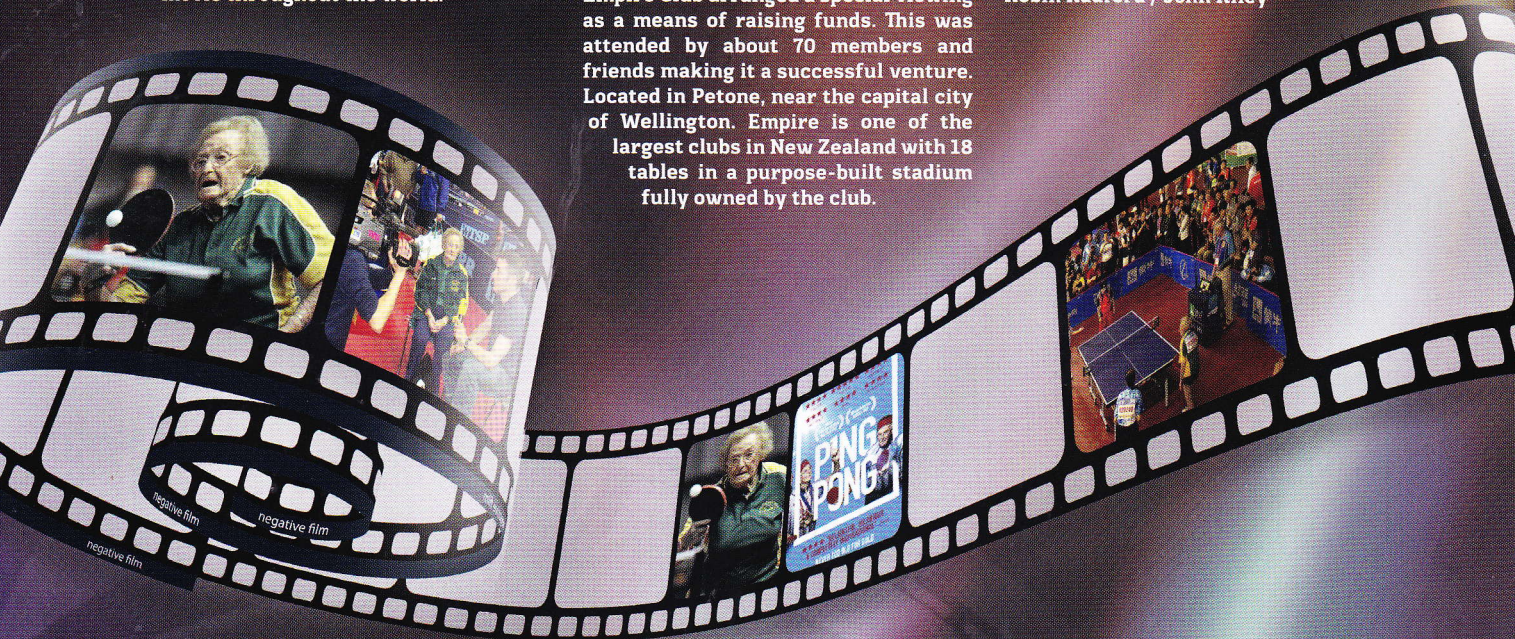
Following the cinema release DVDs were made available for sale or rental.

Two promotional events are known to have been held in New Zealand. The Empire Club arranged a special viewing as a means of raising funds. This was attended by about 70 members and friends making it a successful venture. Located in Petone, near the capital city of Wellington, Empire is one of the largest clubs in New Zealand with 18 tables in a purpose-built stadium fully owned by the club.

Sarah Her-Lee (ranked No 1 in New Zealand for 2013) arranged a display at Rialto Cinemas in Newmarket, Auckland, challenging members of the public to an 11 point game. Anyone scoring 4 points or more could win a double pass to the movie. Unsurprisingly nobody managed it but as a goodwill gesture some passes were still given away.

For New Zealand the screenings were nicely timed as a helpful build-up to these wonderful World Veteran Championships.

Robin Radford / John Kiley



## CELEBRATING A TABLE TENNIS ICON: DOROTHY (DOT) DE LOW

Veteran Table Tennis icon Dot De Low as she was known to her family friends and fellow competitors died earlier this year at the age of 103.

Dorothy was always proud to wear the Australian Green and Gold jersey although she born in England she never forgot her roots, but she always called Australia home.

A late starter in the game she quickly went on to achieve greatness and first

competed in the World Veterans' Table Tennis Championship in Baltimore in 1990 and has competed in every Championship since. She won the Over 80 Womens' Singles in Dublin in 1992 and reached the final in Melbourne in 1994. In 2008 in Rio, at the age of 97 it was her 10th Veteran Championship. Not deterred by age Dorothy was recognised as the oldest volunteer at the 2000 Sydney Olympic Games. A role model for health, vitality and

commitment, those that knew her well say: "Any time there was a game on, Dot was keen to play"

Dorothy did not win many games, but she loved table tennis for the exercise and the great friendships she made over the years.

Now remembered and forever immortalised in the hit movie Ping Pong.



# Kiwi songz

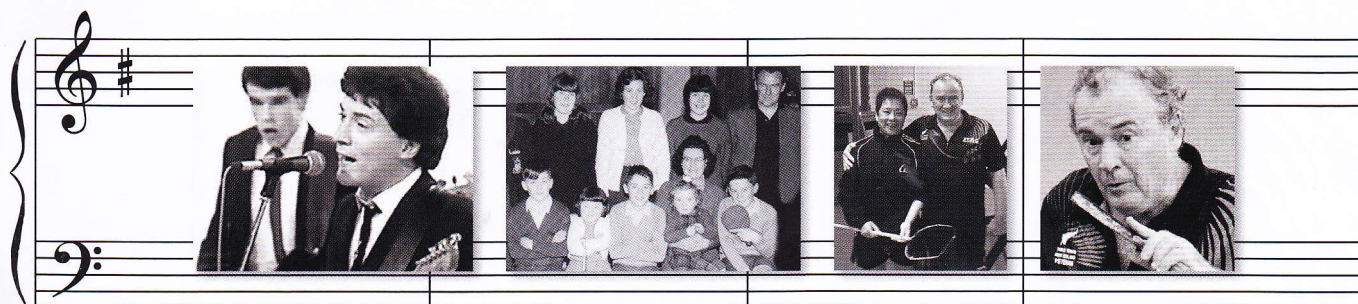
Having a father, an aunty and a sister who were New Zealand Open Table Tennis champions and belonging to a family who all played the great game, I had little choice but to have a bat in my hand from an early age. We would happily troop down to the end of the garden to the dedicated little table tennis room (built by Dad and his brothers in the 1930s) for coaching and games on a regular basis. This was followed by years\* of fun-filled family trips to tournaments up and down the country – travelling sometimes by train or ferry, but mostly squeezed into our little Fiat with three rows of seats for a family of eleven. Then for me came the excitement of making the Otago Junior team and winning the final game to help our team win our grade at the NZ Champs. Sharp serves, third

NZ over-35 doubles in Timaru. We played every regional tournament and were unbeaten building up to the Nationals. We were however unseeded. After beating the top seeds in the first round in a close battle, we made it to the final. I'll never forget our opposition refusing to warm up as Les and I practiced for thirty minutes. One of them said, "I could beat you with my bat in the wrong hand." We destroyed them in front of a supportive Canterbury and Otago crowd. I was hooked again.

After playing in five Australian Veterans tournaments for New Zealand I became weary of losing to that funny rubber – long and short pimples. If you can't beat them, join them. I spent three years trying every pimple rubber imaginable and settled on

the songs. The CD has a kiwiana theme and includes three tracks that feature on the World Table Tennis Veterans 2014 website. It even includes a new musical passion, the theme song for the New Zealand Ukulele Festival - *Kiwi Ukulele*.

Having played in the 1994 World Veterans Championships in Melbourne along with my father and other family members, I know the excitement of a World Veterans week. Players I know, up and down New Zealand, are practising hard and getting extra coaching, all hopeful of getting through their group into the main draw. But with approximately 1700 entries this will be no easy task. Will my coaching from one of New Zealand's top players Li Chunli [ Gold, Silver and two bronze medals at the 2002



ball attack from both sides and a steely determination – that was my game as a junior - how things were to change as a veteran player! "That's me with the bat"

Another family passion was music, fostered by Mum who made sure each of the children had a special skill away from the great game. She instigated frequent family sing-songs where the distinctive sound of Dad's blues harp was integral to the occasion. After learning the ukulele, the mandolin, and then the guitar at high school, I formed my first band *Mother Nature*. In 1982 I was playing lead guitar, singing and writing songs for the Dunedin band *The Knobz*. We were fortunate to have three top-50 singles in the early 1980s including the song *Culture* that reached number five. So I pursued a career as a musician much to my Dad's initial displeasure. However I heard later he had told a neighbour, "My son has a song in the charts you know!" And yes I gave away the great game for twenty years.

When I was in my early thirties, and too old to be a rock star, a friend Dad coached, Les Stewart, talked me into entering the

a long pimple rubber for my backhand, namely Tibhar Grass D.TECS OX. With the words "that rubbish should be banned" ringing in my ears, my results went through the roof, culminating in my captaining of the NZ team that won the gold medal in the over-60 singles at the Australian Veterans 2013.

When I heard the World Veterans Tournament was to be held in New Zealand in 2014, I found myself wondering about songs that were specifically about the great game and I could not think of any so I decided to rectify this. Initially I started work on a song that could be sung by a large crowd at a tournament – *Play Ping Pong*. This was after seeing this slogan on a t-shirt at the 2013 New Zealand Veterans tournament. I then began compiling songs for a commemorative CD which is to be a fundraiser for the tournament. The idea was to create a special snapshot of Kiwi Culture in the form of a 14 track CD – *KIWI SONGZ* – the hope being that long after the tournament is over, memories of games, friends and trips around New Zealand will be recaptured for players as they listen to

Commonwealth games], be enough to get me through? That remains to be seen, but either way it will be an awesome experience at the 2014 World Veterans Tournament and, as the song goes, fantastic to see "the finals when champions arise".

Don't forget to buy your copy of the limited edition CD – *KIWI SONGZ* – from the stadium. If you go to the gala dinner, you will hear some of the songs from the CD performed live by our band. There will also be a chance to hear Play Ping Pong at the start of play each day – a "go to your table" call!

Have a wonderful tournament everyone and I look forward to talking with you.

Kevin Fogarty

Feel free to email me for further information at:

[fogartymusic@gmail.com](mailto:fogartymusic@gmail.com)

[www.ukenz.com](http://www.ukenz.com)





# STAG®

## 182 COUNTRIES ONE BRAND

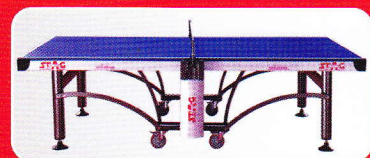
[www.stag.in](http://www.stag.in) | [www.stagtv.tv](http://www.stagtv.tv)



**PETER KARLSSON**  
5 TIMES WORLD CHAMPION &  
EUROPEAN CHAMPION



**STAG**  
BRAND AMBASSADOR



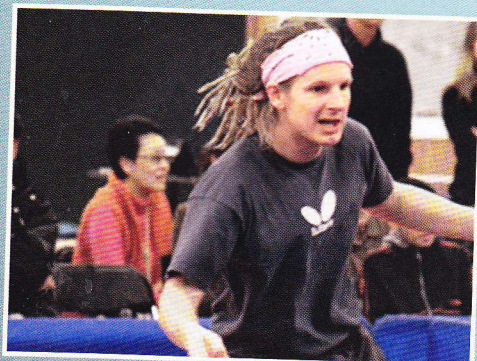
Stag International, A-19/20, Udyog Puram, Delhi Road, Meerut-250103 (India)

Ph.: +91 121 2440976, 2440993, 2441035 | Fax: +91 121 2441009 | [stagin@gmail.com](mailto:stagin@gmail.com) | [info@stag.in](mailto:info@stag.in)



# AUCKLAND TABLE TENNIS ASSOCIATION

- 20 INTERNATIONAL QUALITY TABLES AVAILABLE FOR CASUAL HIRE
- SPECIAL RATES FOR GROUP BOOKINGS
- STADIUM KEYHOLDER MEMBERSHIPS AVAILABLE
- FREE PARKING
- CAFETERIA FACILITIES
- ONSITE TABLE TENNIS PRO-SHOP
- LARGE LOUNGE AND SPECTATOR VIEWING AREA



99A GILLIES AVENUE • EPSOM • AUCKLAND 1023 • TEL. +64 9 520 2291 • AUCKLANDTT@XTRA.CO.NZ

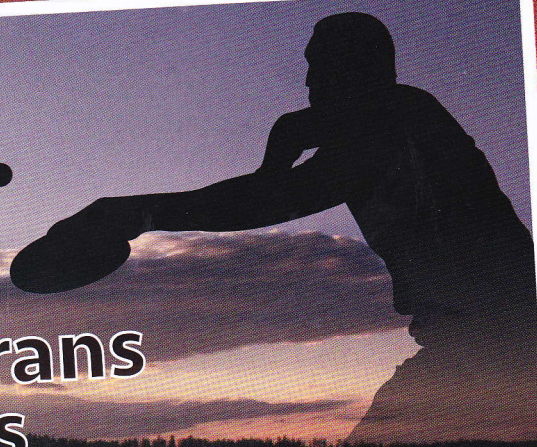
*Welcome!*



TABLETENNIS  
**2015**

**European Veterans  
Championships**

Tampere, Finland 29.6.-4.7.2015



[www.evttc2015.com](http://www.evttc2015.com)



# AUT MILLENNIUM: BE THE BEST YOU CAN BE!

AUT Millennium (AUTM) is more than just a university campus. Located on Auckland's North Shore, this National Training Centre for High Performance Sport is considered New Zealand's leading institute for sports research, coaching and management. During a visit in 2011 Jacque Rogge, the President of the IOC, publicly rated AUTM as being amongst the best he had ever seen. The result of an ongoing partnership between AUT University and the Millennium Institute of Sport and Health, AUTM is home to High Performance Sport New Zealand and several organisations responsible for managing and administering the delivery of sport at an international, national and regional level. These include Tennis New Zealand, Athletics New Zealand, New Zealand Water Polo, North Shore Swimming and North Harbour Bays Athletics. In 2015, it will also be home to the Sir Owen G Glenn National Aquatic Centre.

The vision of AUTM is to resource the community as well as New Zealand's next generation of elite athletes, helping them to be the best they can be. The current facility houses a public gym and a 50metre swimming pool. During the school holidays, the ground floor is full

of local children taking part in numerous activities and fun-looking programmes. Over 30 AUT University staff and around 50 students — mainly postgraduate scholars from all around the world - share the second floor of this unique facility, conducting multi-disciplinary research studies within the Sports Performance Research Institute of New Zealand (SPRINZ), the Human Potential Centre and/or the Coach Development Centre. The SPRINZ Exercise Physiology, Strength and Conditioning and Sport Kinesiology Laboratories, as well as their Running Mechanics and Endurance Performance Clinics, are situated deep within the heart of AUTM, allowing the researchers and their research assistants unparalleled access to athletes of all levels who are recovering from injuries and/or looking to improve their performance/potential. AUT's Human Potential Centre, led by Professor Grant Schofield, focuses on enhancing the physical health, dietary habits and mental wellbeing of local communities and international athletes. Launched in 2011, the AUT Coaching Development Centre, in partnership with the Greater Auckland Coaching Unit (GACU), has quickly established itself a dedicated network of professionals

who support their desire to advance the development and distribution of coaches capable of leading teams and inspiring individuals of all athletic abilities. Finally, the most recent addition to the AUT Family found at AUTM is the Sports Business Research Group; a cluster of likeminded scholars interested in exploring and advancing the more corporate and commercial-aspects of sports production, participation and promotion. The founder of this group, Dr Richard Keith Wright, was approached by Table Tennis New Zealand in September 2013 and invited onto the Board of Directors for the Stag WVC 2014. The Athlete Lodge at AUTM is being used by a group of WVC 2014 participants and Dr Wright is hopeful that the newly established relationship between AUT University and the Table Tennis community of New Zealand (and beyond) will prove to be a lasting legacy of this WVC. For further information about AUTM please introduce yourself to Dr Wright during the event or check out the following websites.

[www.autmillennium.org.nz](http://www.autmillennium.org.nz) or  
[www.aut.ac.nz/study-at-aut/campuses/aut-millennium-campus](http://www.aut.ac.nz/study-at-aut/campuses/aut-millennium-campus)



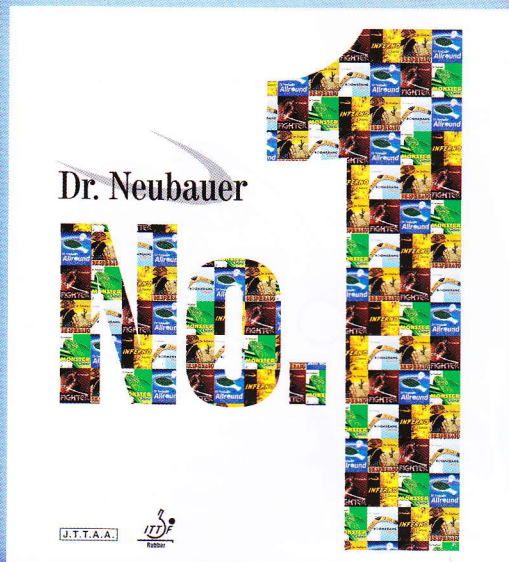


**THE** specialist  
for pimples and  
Anti-Spin rubbers

info@drneubauer.com  
www.drneubauer.com

# Dr. Neubauer

## NEW LONG PIMPLES



**Dr. Neubauer NUMBER 1 - Discover new pleasures of the game!**

Our new long pimple rubber **NUMBER 1** will enchant you in many ways. It is an innovative and distinct development that comes with a totally new rubber formula and vertical pimple alignment. The pimples got even softer in the process and will enable you to reduce the speed of the game while blocking passively.

Overall **NUMBER 1** provides fantastic control at all levels. This is particularly noticeable while returning services and blocking against fast topspin balls.

### NUMBER 1

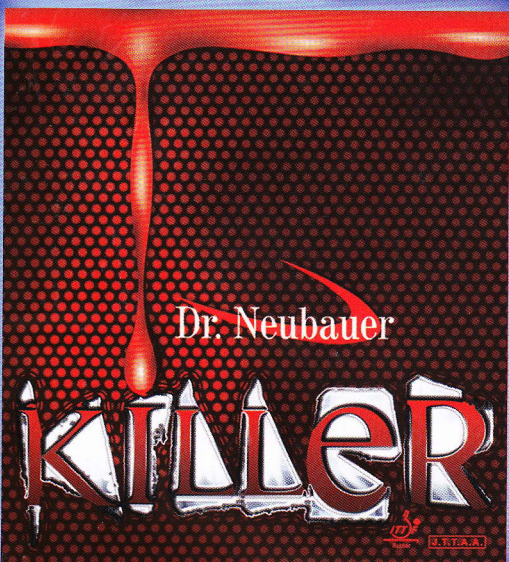
Sponge mm:   
**OX / TEXTILE / 0.6 / 1.0**

Speed	Effect	Control
55	80	87

The ball hereby bounces even lower on the other side of the table. **NUMBER 1** is also very efficient for putting pressure on your opponent. The rubber is highly versatile and will enable you to produce all standard long pimple attacking shots at ease.

**NUMBER 1** is a great match for nearly all long pimple players, find out for yourself!

## SHORT PIMPLES



**Dr. Neubauer KILLER - Short pimples with astounding disruptive effect**

**KILLER** is an astonishing new development among offensive pimple-out rubbers. Actually it is a combination of short and medium pimples rubbers that merges the best characteristics from both rubber types:

**KILLER** provides very good attacking possibilities and is thus an outstanding choice for a modern pimple-out game close to the table. The rubber fulfils all necessary requirements for fast counter-attacking and strong hitting. The decisive factor is the disruptive effect obtained. The rubber is more disruptive than most other short pimple rubbers and produces a very low bounce. Control is excellent and enables the player to "feel" the ball at all times. All in all **KILLER** is hardly sensitive at all to oncoming rotation.

### KILLER

Sponge mm:   
**1.5 / 1.8 / 2.0 / MAX**

Speed	Effect	Control
94	80	94

With thin sponge (1.5mm) the rubber even enables to produce drop shots and chop-blocking against topspin. The rubber can also be used for a modern chopping and attacking game with great control.

This makes **KILLER** a "must-have" for most short and halflong pimple players!

## BLADE



**Dr. Neubauer MATADOR - The new offensive combination blade**

This new development has been conceived for combination bat players that have a preference for fast blades, yet require a high level of control and disruptive effect. The special plywood composition of **MATADOR** provides astounding power for a modern attacking game. Fast topspin shots as well as looping with a lot of rotation are both very easy to perform. It is one of the very few OFF blades on the market that also produce a distinctive disruptive effect when used with pimple-out or Anti-Spin rubbers. Most importantly this blade produces the low bounce that all combination bat players are traditionally looking for. This holds true while blocking passively with long pimples as well as for chop-blocking close to the table. When used with offensive pips-out rubbers this blade provides all you need for a powerful and highly effective attacking game. **MATADOR** is relatively rigid yet still provides a remarkable "touch" for the ball, offering a surprisingly good control for all playing strokes.

**MATADOR** - A "must have" for aggressive combination bat players!

### MATADOR

OFF-  
Weight: appr. 90 g  
Layers: 7

Speed	Control	Rigidity
93	90	88

## Contact Information

Auf der Huth 7  
D-90 455 Nürnberg, Germany

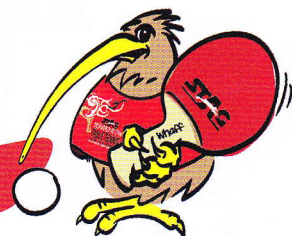
Internet: www.drneubauer.com  
E-Mail: info@drneubauer.com

Dr. Neubauer



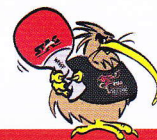


# LoL



## with Whiff & Whaff

*As Chair of the STAG World Veteran Championships 2014 Leveraging of Legacy (LoL) Committee, it gives me great pleasure to welcome you to both Auckland and New Zealand. Your passion and pride, your energy and enthusiasm, your continued commitment and your truly inspiring lust for life remains the sole reason this event not only exists, but also continues to appeal to so many people from so many places. Thank you for choosing to join us here at the 17<sup>th</sup> WVC and welcome to our side of the world.*



In essence, the concept of leverage and legacy is all about understanding and acknowledging the broader benefits that an event can deliver to the wider community and country. Leverage and legacy are the broader and longer-lasting national and local benefits that are set in motion then realised by an event. It is the LoL Committees role to ensure that laughter fills the air of Auckland's Trusts Arena and the neighbouring Grandstand from the 10 to the 17<sup>th</sup> of May 2014. In 2013, key stakeholders from the host community were invited to identify and initiate a series of leveraging activities to generate sustainable benefits for New Zealand and its growing table tennis community.

The LoL Strategic Plan 2014-2020 was created to celebrate and showcase the WVC. Our goal is to offer the host community an experience they will never forget, whilst also providing a solid platform upon which

Table Tennis New Zealand can continue to support the aspiring WVC entrants of the future (both near and far). The Plan is divided up into two areas (shown below), each of which focuses on two particular agendas deemed worthy of leveraging. On one side you have the 'Table Tennis' focus, which concentrates of the long-term promotion and development of your sport. On the other side, you have the 'Tourism and Trade' focus, which acknowledges the fact that the WVC 2014 has attracted entrants from 57 different nations, with over 1500 people arriving in Auckland for the first, perhaps only, time.

The STAG WVC 2014 legacy will last for as long as people are still talking about the time this six-day world-class tournament travelled all the way to New Zealand. The Strategic Plan 2014-2020 documents our desire to use/utilise the STAG WVC 2014 as a catalyst to:

1. Turn existing awareness and attraction into meaningful attachment and manageable affiliation at a local, regional and national level over the next six years.
2. Reward existing attachment and affiliation at a local, regional and national level over the next six years.
3. To ensure that everyone involved in the six days of the STAG WVC 2014 is offered "a great experience".
4. To deliver a "World-Class Table Tennis tournament" that allows all the STAG WVC 2014 stakeholders the opportunity to generate a noticeable, noteworthy, return on investment (ROI).





# Whiff & Whaff

A number of small activities have been actioned by the LoL committee to assist with the achievement of the above goals, including the creation of a series of local 'Pick up and Play Ping Pong' and/or 'Turn up and Try Table Tennis' open days, run across New Zealand over a six week period surrounding the Championships. The development of a series of workshops for those wishing to upskill in terms of umpiring and event management has also been outlined as a way of rewarding those already involved in the sport. The expansion of an existing schools-based talent identification programme, Project Ping Pong, was also identified as a viable way of raising the profile of table tennis as 'sport for life', and illustrating the social and health benefits that accompany our sport.

One of the most notable legacy's offered through the implementation of the LoL Strategic Plan has emerged through the opportunity for Table Tennis New Zealand to work alongside two Auckland tertiary education institutions; AUT University and Unitec. Many of the LoL activities you will encounter at the event will have been planned and promoted over a six week period by undergraduate students completing either a sport or an event management programme, all of whom have had no prior involvement in the world of Table Tennis. As a part of their course, they were challenged to deliver a sustainable product that adds note-worthy, noticeable, value to the 17<sup>th</sup> WVC. They were placed into project teams and provided their own space at the venue (the Grandstand), which I hope you will all take the time to visit. Your feedback will be requested at some point to assist their ongoing education.

Last but not least, I'd like to introduce you to our two STAG WVC 2014 LoL mascots; Whiff and Whaff (not to be confused with Slazenger's Whiff Waff, launched in London in December 1900). Whiff represents a

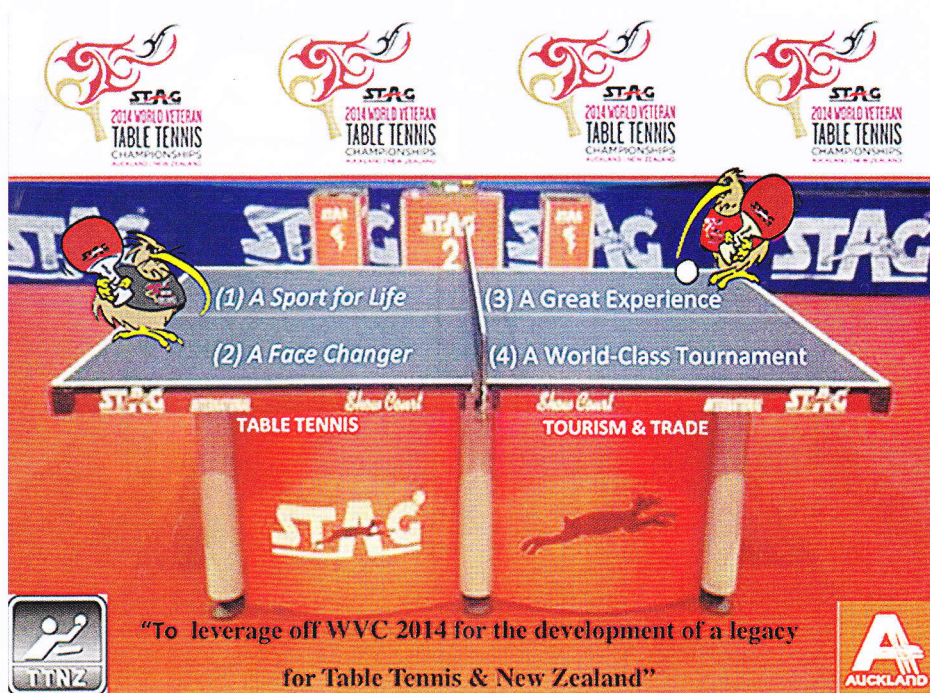
world full of serious table tennis athletes, proudly representing their club, city, country and/or continent. Whiff is 100% focused on winning his matches and wants to be New Zealand's first world champion. Whiff represents all of you in Auckland to win your age group, and will be supporting New Zealanders attending all major events that feature his sport. Whiff has a twin brother who doesn't take the game so seriously.

Whaff is Whiff's twin brother. Whaff plays poikopiko (the Maori name for Ping Pong). Whaff doesn't belong to a Table Tennis club (yet), but enjoys playing when ever he can. Whaff loves the game, whether he wins

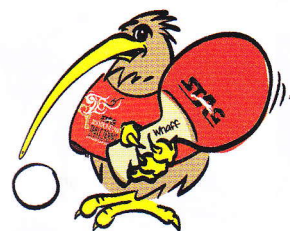
your visit, and hopes you will make plenty of new friends during your stay.

On behalf of Whiff, Whaff and the LoL Committee, I would once again like to thank you for entering the STAG WVC 2014 and welcome you to New Zealand. I wish you all the best, and look forward to meeting as many of you as possible during your time in Auckland. Please come and visit me in the Grandstand, where I shall be overseeing many of the LoL projects created specifically to put a smile on your face.

Dr Richard Wright  
WVC Ltd 2014, Chair of the LoL Committee.



or loses. Whaff loves playing against his friends and family, including Whiff, but also likes to use poikopiko as a way of keeping fit and meeting new people. Whaff dreams of table tennis being played in every school in New Zealand, and is here to support those who have travelled to Auckland to enjoy this once-in-a-lifetime experience. Whaff wants you all to embrace the local culture during





Join 

for the 11th annual

# NZCT AIMS GAMES

## International Sporting Championships

Tauranga, Bay of Plenty, New Zealand

Sunday 7th to Friday 12th  
September 2014

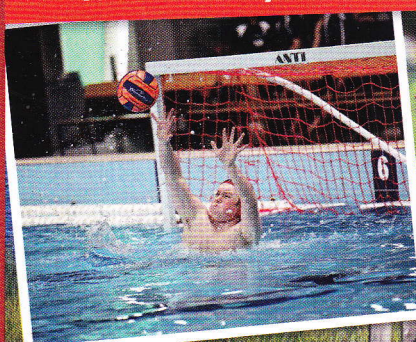
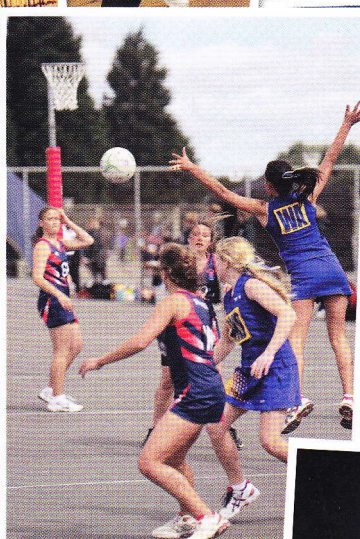
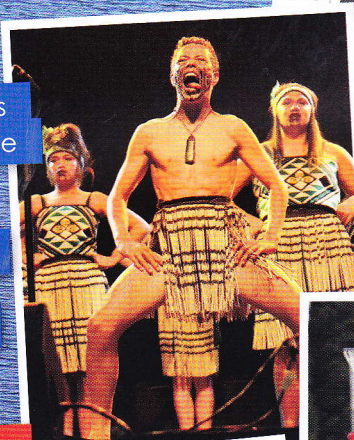
### Why choose the NZCT AIMS GAMES?

- Test yourself against the best for your age
- Intensive competition in a supportive environment
- Fantastic facilities
- A social and cultural experience you will never forget
- International flavour and competition

### 17 Sporting Codes

- Badminton
- Basketball
- Cross Country
- Football
- Golf
- Gymnastics
- Hockey
- Indoor Bowls
- Multisport
- Netball
- Rugby Sevens
- Rugby League
- Squash
- Swimming
- Table Tennis
- Tennis
- Water Polo

Entry closing date:  
Wednesday 28th May 2014



[www.nzaimsgames.co.nz](http://www.nzaimsgames.co.nz)

Ask for an info pack

Tournament Director:

Vicki Semple

Ph: 027 576 0066

Email: [vickis@sportbop.co.nz](mailto:vickis@sportbop.co.nz)



**THE BOARD AND STAFF OF THE WORLD VETERAN CHAMPIONSHIPS LTD AND TABLE TENNIS NEW ZEALAND WOULD LIKE TO THANK THE SPONSORS AND PARTNERS LISTED BELOW FOR THEIR FANTASTIC SUPPORT AND THE FAITH THEY HAVE SHOWN IN US. WITHOUT THIS SUPPORT THE EVENT WOULD NOT BE POSSIBLE.**



## EVENT CREW AND OFFICIALS

Burns	Melanie	Lowe	Jenny	Huang	Xiao Rong	Nagae	Hideo	Perry	Barbara
Cheng	Chang Chia	Lowe	Malcolm	Zhou	Tom	Sheehan	Bill	Doyle	Gerry
Jiang	Anthea	Martin	Geoff			Sherman	Maureen	Kraft	Jim
Low	Hilary	McConnell	Lois	Darroch	Maria	Wong	Malcolm	Kocjanic	Terry (Eddie)
Owen	Rena	Rosjin	Carina	Jiang	Anthea	Yamanaka	Yoshiko	Pandit	Sharad
Richards	Caroline	MacPherson	Rheed	Huang	Ada			Aird	Peter
Rosjin	Carina			Wang	Ellen	Freiberger	Rasma	Gupta	Sunil
Wang	Ellen	Pattenson	Doug			Hurr	Ben	Chapman	Austin
Anandasivam	Sivaram	Hui	Zhu (Steven)	Bygrave	Rodney	Jutle	Harmesh (Harry)	Doyle	Stephen
Koscik	Tomasz	Moore	Eddie	Davies	Brent	Odegbami	Michael	McGeehan	Kerry
Jeffery	Desirae	Fenwick	Simon	Eade	Chip	Patane	Mark	Partridge	Derek
		Kim	Sophie	Herbert	Tony	Sengupta	Sanjoy	Kian Hann	Yap
Lea	John	Sherman	David	Jones	Peter	Sharma	Shri	Talbot	Ian
Bohm	Martina	Williams	Evan	Martin	Geoff	Wati	Pushpa	Talbot	Chris
Giang	Chau	Millard	Eddie	Page	John			Jacobson	John
Doyle	Gerry	Jacobson	John	Cairns	Simeon	Ammundsen	Richard	Penberthy	John
Lim	Victor	Challis	Keith	Upjohn	Wayne	Darroch	Tony	Bungey	Greg
Shirriff	Sue	Ledezman	Reinaldo	Jones	Grant	Hellwig	Irina	Cudby	Shona
Baker	David	Burnrdred	Neil			Johnson	Ken	Davies	Doris
Young	Christine	Doyle	Gerry	OFFICIALS		Morikawa	Yumiko	Hopkins	Alan
Law	Zedplin	Huang	Ada			Penberthy	Bruce	MacAskill	Jessicca
		Jarmin	Shona	Schnabel	Gerhard	Reid	Lynda	Patane	Mark
Enkhbileg	Buyandelger	Knight	Robert			Roberts	Averil		
Huang	Ada	Martin	Geoff	Beumier	Isabelle	Scarr	Val	Schollmeyer	Joachim
McConnell	Lois	Paul	Heather	Finlay	Ian			Giang	Chau
Richards	Caroline	Richards	Caroline	Ireland	Graeme	Adamson	Clive	Walle	Mimi
Shirriff	Sue	Rosjin	Carina	Kudoo	Makio	Allardye	Mervyn	Garrett	Debbie
Shorter	Terry	Zhang	Yi	Lau	Joseph	Chui	Lim Ming	Wright	Judith
Coleman	Eddie	Coleman	Eddie	Males	Phil	Davey	Gregg	Kusche	Ulrike
Ledezman	Reinaldo	Wang	Ellen			Goto	Akiko	Davies	Brent
Adamson	Dereck					Jarmin	Jim	Owen	Rena
Darroch	Maria	Alabaster	Maureen	Ho	Fanny	Sim	Clive	Codlin	Helen
Graham	Ricky	Waters	Virginia	Kusche	Joachim	Swale	Patricia	Ahmed	Abbis Uddin
Kleiser	Ebi	Bungey	Carole	Akutsu	Kimie	Walle	Mimi	Ferguson	Bill
Shirriff	Sue	Clark	Adam	Bungey	Greg	Woo	Wilhelmina	Ferguson	Glenda
		Keown	Angela	Fukuda	Tomoko	Alabaster	Alan	Blair	Robbie
		Turton	Jenna	Hamabe	Yuko	Baker	David	Dean	Christine
Foster	Ruth	Wood	Elitia	Hopkins	Alan	Beaver	Val	McConnell	Nick
Garrett	Ngaire	Wood	Nick	Kaneko	Keiko	Winkley	Russell	Ede	Michael
Kraft	Jim	Lim	Young Do	Kita	Yoshiyo	Challis	Keith	Cleary	Margaret
Lea	Xavier	Radford	Robin	Konno	Kazuko	Armstrong	Stuart	Kim	Sophie





# 18th WORLD VETERAN TABLE TENNIS CHAMPIONSHIPS

## ALICANTE & ELCHE / SPAIN

23 - 29 May 2016

